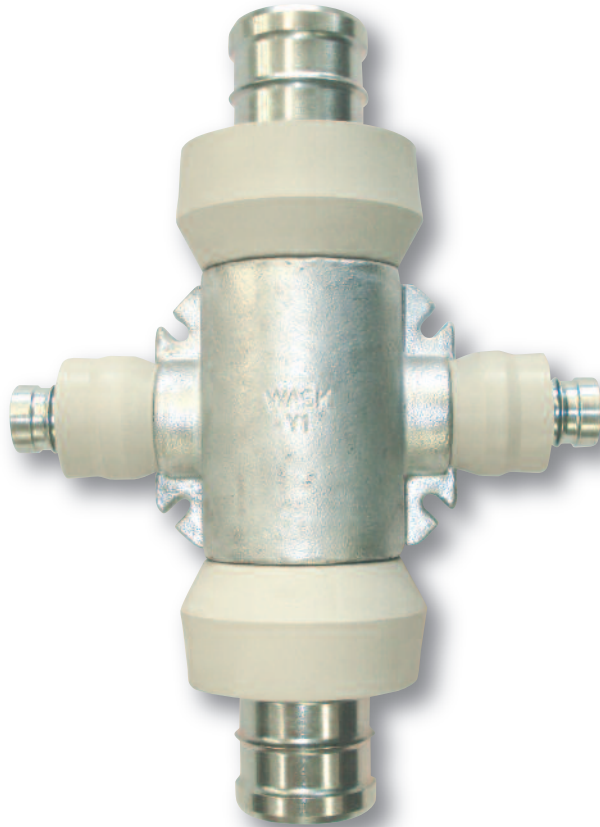


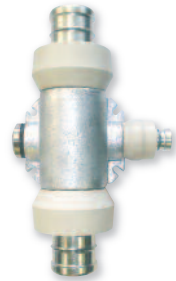
RISER & LATERAL SYSTEM

External Polyethylene (PE) Sizes 63mm



CONTENTS

3. General notes
4. 63mm riser arrangement
5. Location and installation of fitting (stage 1)
6. Riser 63mm crimp terminations (stage 2)
7. 63mm GRP kit
8. Wall anchors and screw instructions
9. Fittings matrix

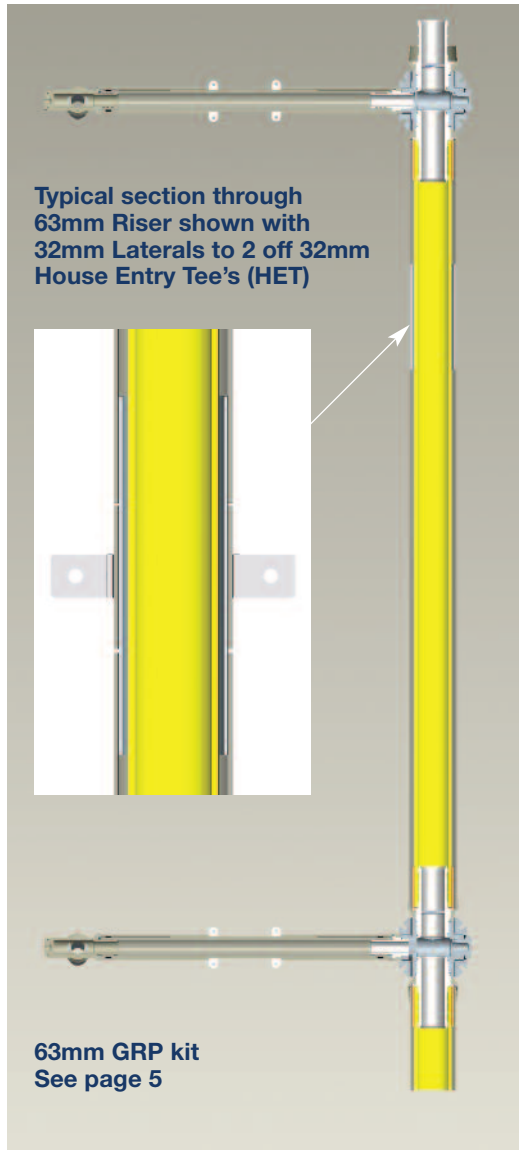
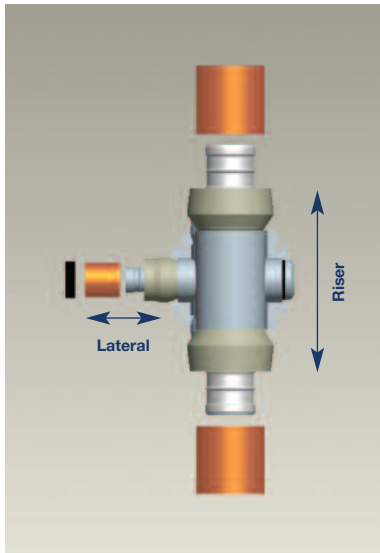


GENERAL NOTES

1. The WASK gas Lateral and Riser system is for external use only.
2. The following instructions are based on installing the Riser system working upwards.
3. The Riser uses 63mm diameter PE pipe with the GRP sleeving in 82mm diameter. Laterals with a 44mm diameter GRP sleeving are also configured in the same manner.
4. Select a suitable location on the wall for the Riser, taking into account any ground obstructions, other wall equipment and the service entry positions.
5. Where possible, ensure the service entry positions are in the same relative positions for each dwelling.
6. Direction changes are not intended with the 63mm Riser system but can be accommodated with the Laterals if required by a selection of Elbow fittings
7. All above ground polyethylene pipe must be covered by the GRP sleeves.
8. Where long lengths of laterals are required, extra GRP pipe clips may need to be installed.
9. All PE pipe must be cut square to 1mm preferably using pipe shears. Pipe cut with a saw must be thoroughly de-burred and swarf removed prior to locating on crimp spigot.
10. The GRP pipe must be cut square to 1mm, remove both internal and external burrs.
11. On the lateral system, Non-bracketed fittings can be used for negotiating internal and external corners. It is essential to fix retaining clips to the wall, approximately 150mm from the corner to support the GRP sleeving system.
12. 63mm systems provide vertical supply to individual feeds, horizontal systems feed from this in 32mm or 25mm to provide the individual supply to the House Entry Tees. The system may be used horizontally where appropriate e.g. maisonettes above shops. Additional GRP sleeve retaining clips may be required where necessary.
13. Where the distance between fittings exceeds the length of available GRP sleeve, sections can be joined together either by the telescopic system for the 44mm GRP, or a joining kit for the larger 82mm GRP. (ref DY0136) – NOTE: a GRP kit is always required between any two 63mm fixings.
14. Pressure test the system to the appropriate gas industry standards.

63MM RISER & LATERAL ARRANGEMENT

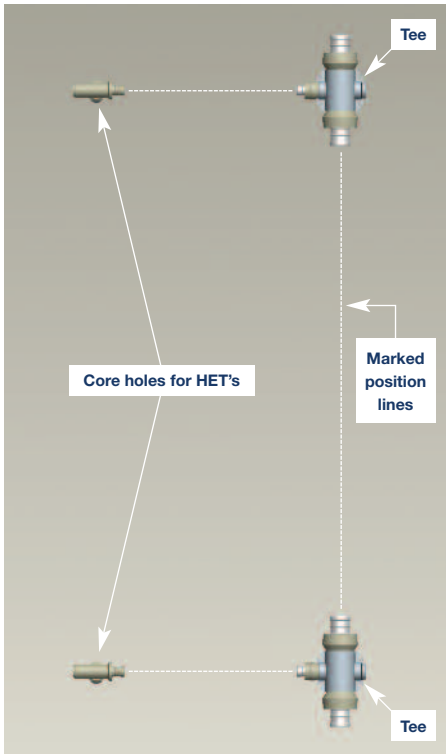
Riser & Lateral Fitting



Notes

See also 25mm & 32mm Lateral & Riser instructions for details on the telescopic sleeve arrangement

STAGE 1 – LOCATION AND INSTALLATION OF FITTINGS



Refer to stage 2 for 63mm Crimp jointing instructions.

IMPORTANT !

For laterals utilising 25mm or 32mm pipe – please refer to the 25mm & 32mm Crimp joint installation instructions

Notes

1. The method of installation is working upwards.
2. For the purpose of illustration the distance between the fittings has been reduced.

1. Establish the meter locations and mark on the wall the appropriate entry positions
2. Select a suitable position on the wall for the riser, taking into account any ground obstructions, other wall equipment and the service entry positions.
3. Mark a vertical line by a suitable method
4. Mark an horizontal line from the entry point to the vertical line by a suitable method.
5. Core drill each entry position, taking care not to damage the external and internal wall surfaces.
6. Align the Riser fitting to be used (Cross, Tee, Elbows etc) and mark positions of anchor screws – repeat for further fittings to suit both Riser and Lateral fittings.
7. Drill the anchors screw holes. Note: See page 6 for anchor drilling instructions.
8. Secure Risers fittings to the wall using the screw kits provided and a 10mm A/F socket driver.
9. Locate the House Entry Tee's into the cored holes but do not fix to the internal wall with the retaining washer.

STAGE 2 – RISER 63MM CRIMP TERMINATIONS

63mm Crimp joint procedure

Utilising a REMS AKKU press fitted with Crane Crimp tool set part number: P1302

Work from bottom to top – place GRP/(GRP kit & securing bracket) onto assembly with the PE before crimp commencement



1. Fitting to be crimped held in position with bolts but not secured (Allowing sufficient room for crimp tool access)



2. Roll back Shroud to load fitting



3. Locate PE pipe on to Crimp spigot



4. Place PE pipe over Crimp spigot and push home



5. Slide the Crimp ring into position (i)



6. Typical Crimp press with tooling



7. Position Crimp tooling over Crimp ring



8. Operate Crimp press to perform jointing, tool automatically resets when joint is complete



9. When crimp is complete, remove Crimp tooling and press



10. Crimp joint completed



11. Slide over GRP into position (see also page 5)



12. Roll back shroud and secure bolts to wall to complete

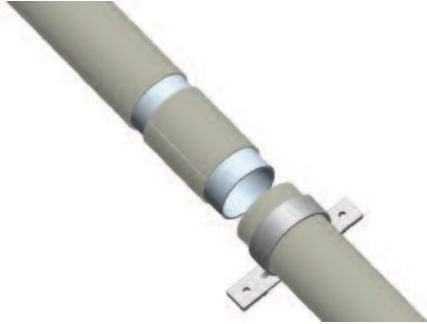
Notes The method of installation is working upwards

(i)When completing the top of the riser, attaching the rubber band to the PE tubing will prevent the crimp ring from sliding down the assembly

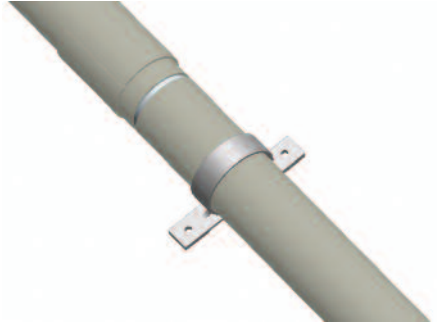
STAGE 1 – LOCATION & INSTALMENT OF FITTINGS

63mm GRP kit between fitments

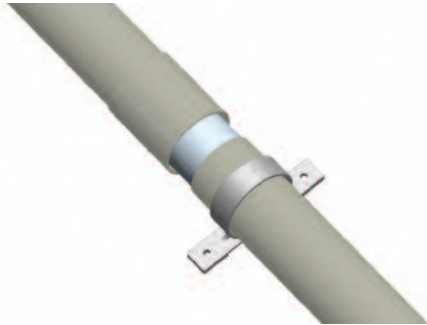
63mm GRP kit (DY0136) consists of: Outer tube – 2.0m, Stepped tube – 1.9m
Spacing ring – 0.1m, 63mm Support bracket, Fixing pack (not shown)



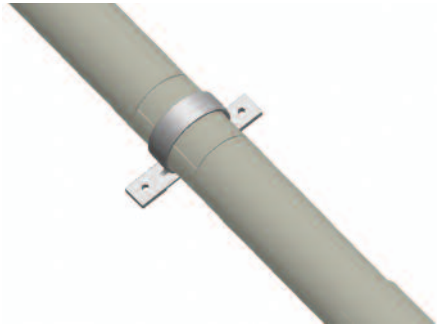
Kit has a stepped tube which fits to the Outer tube – The split spacing ring is free to move – Support bracket also supplied



Offer up outer tube – slide down to allow crimp to take place (fully over stepped tube as shown) – remember to include support bracket



Once crimp complete slide outer tube into location in shroud (see crimp procedure)



Slide and locate spacing ring onto exposed inner section of the stepped tube – if necessary slide back outer tube to fully close gap – position securing bracket centrally – Split can be rotated to rear of assembly to complete appearance – finally secure support bracket to wall with screw pack (see screw instructions)

WALL ANCHORS & SCREW INSTRUCTIONS

Fitting - wall anchors and securing bracket - Rawl M6 x 25mm long loose bolt

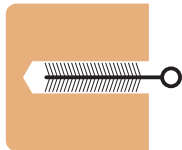
Socket – 10mm A/F (1/4" SQ driver)

Torque – 6 to 10 Nm

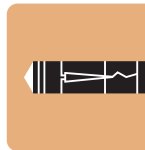
Substrates – Concrete, Brick & Stone



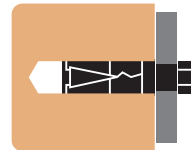
Drill $\text{\O}12 \times 55$
to 60mm deep



Clear hole of dust



Insert shield into
hole without
the bolt



Align fitting
with holes &
insert bolts.

Tighten sufficiently to secure to wall – do not over tighten!

Note

Use only the wall anchors supplied to install the wall mounted fittings.

FITTING MATRIX

DESCRIPTION	RISER - 63mm	PE 80 LATERAL
		32mm
Elbows 90 degree Wall Mounted		AD0195 (LH)
		AD0196 (LH)
Tee Wall Mounted		AD0200
Termination Tee Wall Mounted		AD0234
Cross Wall Mounted		AD0235

To visit our
Video Library
go to:



www.youtube.com/user/CraneBSU



DELTA ROAD,
ST HELENS, NWA9 2ED

TELEPHONE: +44 (0)1744 458649

FAX: +44 (0)1744 453675

EMAIL: sales@wask-uk.com

www.wask-uk.com



FM311 ISO 9001



www.flowoffluids.com

Visit www.flowoffluids.com
to book your copy of the New
Technical Paper 410.

- Designed & manufactured under quality management systems in accordance with BS EN ISO 9001:2008

Every effort has been made to ensure that the information contained in this publication is accurate at the time of publishing. Crane Ltd assumes no responsibility or liability for typographical errors or omissions or for any misinterpretation of the information within the publication & reserves the right to change without notice.

W_RLS63_1012
ICOM_PROD2_V1

CRANE

BUILDING SERVICES & UTILITIES

www.cranebus.com