



Crimp Brass Universal Meter Box Adaptor

AJ Series

APPLICATION

Provides a high strength transition fitting for a polyethylene gas service pipe to a Meter Box installed above or below ground for connection to the customer ECV and meter installation.

DESCRIPTION

Comprising a Crimp mechanical fitting incorporating a bulkhead Bush & C-clip connection to the Meter Box and terminating in a Male BSPT thread. The new Bush design incorporates an integrated support for the GRP cover tube for the PE pipe or directly to the PVC Bend for Semi-Concealed types.

Suitable for low and medium pressure gas meter installations.

CONSTRUCTION

- Body (1): Brass
- C-Clip (2): Engineering plastic
- Ring (3): EPDM Rubber
- Meter Box Bush (4): Engineering plastic
- Crimp Ring (5): Copper – annealed
- Packing Tube (6): Cardboard.

INSTALLATION

The Crimp joint should be made using the correct WASK Crimp before the fitting is installed in the Meter Box. The C-Clip is removed to allow the fitting to be installed in Inset or Recessed type boxes, then snapped back in to place to retain the fitting. For Surface mounted box the fitting can be slid in to place without removing the C-Clip. The GRP cover tube or PVC Bend is then located and retained on the Meter Box Bush.



Every effort has been made to ensure that the information contained in this publication is accurate at the time of publishing. Crane Ltd assumes no responsibility or liability for typographical errors or omissions or for any misinterpretation of the information within the publication & reserves the right to change without notice.

SPECIFICATION

Meets GIS/PL3:2014 requirements, BSI Kite Mark certified KM587336.
 Maximum Operating Pressure (MOP) = 5.5 Bar.

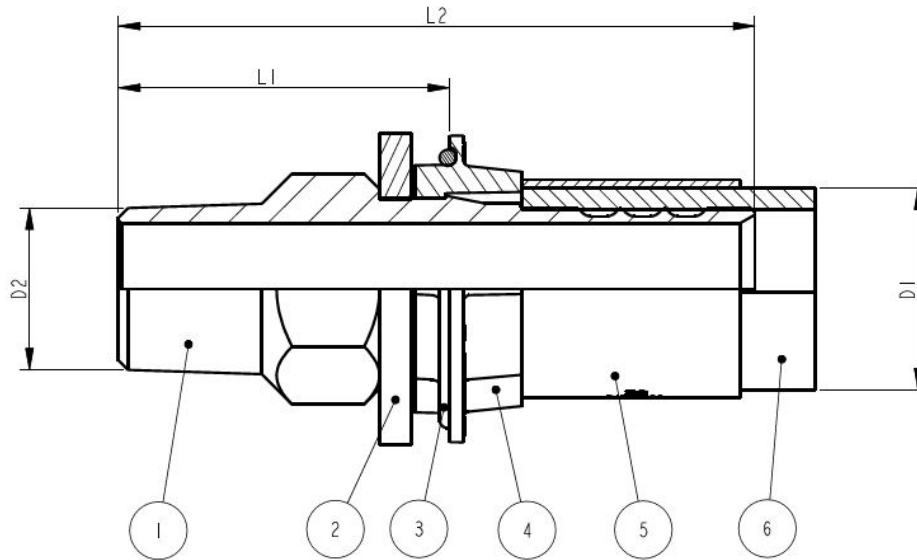
SIZE = PE x NOMINAL OUTLET THREAD DIAMETER				
SIZE	L1	L2	D1	D2
20 SDR9 x 3/4"	52	99	20	3/4" BSPT
25 SDR11 x 3/4"	52	99	25	3/4" BSPT
32 SDR11 x 3/4"	53	102	32	3/4" BSPT
32 SDR11 x 1"	53	102	32	1" BSPT

PE X THREAD SIZES

Available in sizes from 20mm to 32mm with threads 3/4" BSPT to 1" BSPT.

DIMENSIONS

Dimension shown in mm.



To visit our Video Library go to:
www.youtube.com/user/CraneBSU



46-48 WILBURY WAY, HITCHIN,
 HERTFORDSHIRE, SG4 0UD
 TELEPHONE: +44 (0)1462 443225
 TELEPHONE: +44 (0)1462 443226
 FAX: +44 (0)1462 443311
 EMAIL: sales@wask-uk.com
www.wask-uk.com



FM 00311 EMS 553775

- Designed and manufactured under quality management systems in accordance with BS EN ISO 9001.

Every effort has been made to ensure that the information contained in this publication is accurate at the time of publishing. Crane Ltd assumes no responsibility or liability for typographical errors or omissions or for any misinterpretation of the information within the publication and reserves the right to change without notice.

W_CBUMBA_0121_V1