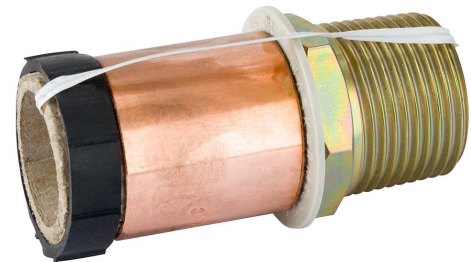




Crimp Male Riser Adaptor

BC Series



APPLICATION

Provides a high strength transition fitting for a polyethylene gas service pipe connection to a BSPT female threaded fitting or valve for above ground riser installations.

DESCRIPTION

Comprising a Crimp mechanical fitting terminating in a Male BSPT thread. A rubber Shroud and Bush are supplied to enable a GRP tube to be fitted to protect the PE pipe above ground from mechanical and UV damage.

Suitable for low and medium pressure installations.

CONSTRUCTION

- Body (1): Steel
- Insulation Washer (3): Engineering plastic
- Crimp Ring (4): Copper – annealed
- GRP Shroud (2): TPE Rubber
- GRP Bush (6): EPDM Rubber
- Packing Tube (5): Cardboard
- Corrosion protection: Zinc electro plated

INSTALLATION

The Crimp joint should be made using the correct WASK Crimp tool after the fitting has been installed on to the pipe or valve. A suitable GRP tube must be fitted before making the final connection.

SPECIFICATION

Meets GIS/PL3:2014 requirements, BSI Kite Mark certified KM587336.

Maximum Operating Pressure (MOP) = 5.5 Bar.

Every effort has been made to ensure that the information contained in this publication is accurate at the time of publishing. Crane Ltd assumes no responsibility or liability for typographical errors or omissions or for any misinterpretation of the information within the publication & reserves the right to change without notice.

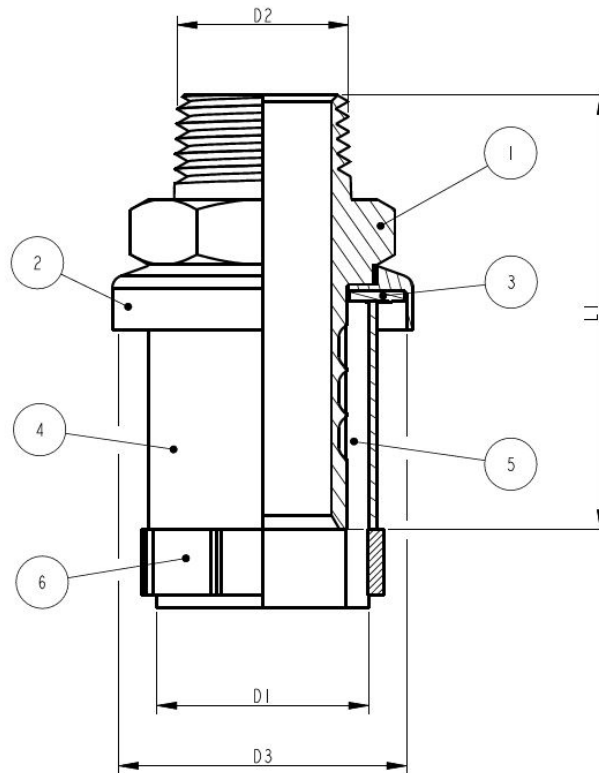
PE X STEEL SIZES

Available in sizes from 20mm to 32mm with threads 1/2" BSPT to 1" BSPT.

DIMENSIONS

Dimension shown in mm.

SIZE = PE x NOMINAL OUTLET THREAD DIAMETER				
SIZE	L1	D1	D2	D3
20 SDR9 x 1/2"	69	20	1/2" BSPT	38
20 SDR9 x 3/4"	70	20	3/4" BSPT	38
25 SDR11 x 1/2"	69	25	1/2" BSPT	38
25 SDR11 x 3/4"	70	25	3/4" BSPT	38
32 SDR11 x 1/2"	71	35	1/2" BSPT	44
32 SDR11 x 3/4"	72	32	3/4" BSPT	44
32 SDR11 x 1"	72	32	1" BSPT	44



To visit our Video Library go to:
www.youtube.com/user/CraneBSU



46-48 WILBURY WAY, HITCHIN,
 HERTFORDSHIRE, SG4 0UD
 TELEPHONE: +44 (0)1462 443225
 TELEPHONE: +44 (0)1462 443226
 FAX: +44 (0)1462 443311
 EMAIL: sales@wask-uk.com
www.wask-uk.com



FM 00311 EMS 553775

- Designed and manufactured under quality management systems in accordance with BS EN ISO 9001.

Every effort has been made to ensure that the information contained in this publication is accurate at the time of publishing. Crane Ltd assumes no responsibility or liability for typographical errors or omissions or for any misinterpretation of the information within the publication and reserves the right to change without notice.

W_CMPRA_0121_v1