



Crimp Male Transition Below Ground

BC Series



APPLICATION

Provides a high strength transition fitting for a polyethylene gas service pipe connection to a BSPT female threaded fitting or valve for below ground installations.

DESCRIPTION

Comprising a Crimp mechanical fitting terminating in a Male BSPT thread. A rubber Bush is supplied to enable a PE Anti-Shear Sleeve to be fitted to protect the PE service pipe where it is rigidly mounted. Suitable for low and medium pressure installations.

CONSTRUCTION

- Body (1): Steel
- Insulation Washer (2): Engineering plastic
- Crimp Ring (3): Copper – annealed
- Anti-Shear Bush (5): EPDM Rubber
- Packing Tube (4): Cardboard
- Corrosion protection: Light oil film – must be site protected

INSTALLATION

The Crimp joint should be made using the correct WASK Crimp tool after the fitting has been installed on to the pipe or valve. A 50mm PE anti-shear sleeve should be fitted before making the final connection. Fittings must have an approved site corrosion protection system applied after installation and pressure testing.

SPECIFICATION

Meets GIS/PL3:2014 requirements, BSI Kite Mark certified KM587336.

Maximum Operating Pressure (MOP) = 5.5 Bar.

Every effort has been made to ensure that the information contained in this publication is accurate at the time of publishing. Crane Ltd assumes no responsibility or liability for typographical errors or omissions or for any misinterpretation of the information within the publication & reserves the right to change without notice.

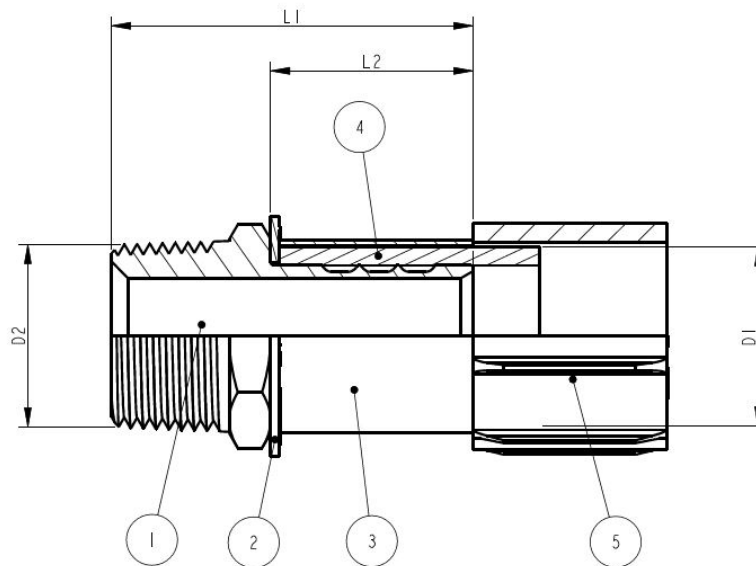
PE X STEEL SIZES

Available in sizes from 16mm to 32mm with threads 1/2" BSPT to 1" BSPT.

DIMENSIONS

Dimension shown in mm.

SIZE = PE x NOMINAL OUTLET THREAD DIAMETER				
SIZE	L1	L2	D1	D2
16 SDR7 x 1/2"	59	27	16	1/2" BSPT
20 SDR9 x 1/2"	67	36	20	1/2" BSPT
20 SDR9 x 3/4"	70	36	20	3/4" BSPT
25 SDR11 x 3/4"	70	36	25	3/4" BSPT
32 SDR11 x 3/4"	72	38	32	3/4" BSPT
32 SDR11 x 1"	70	38	32	1" BSPT



To visit our Video Library go to:
www.youtube.com/user/CraneBSU



46-48 WILBURY WAY, HITCHIN,
 HERTFORDSHIRE, SG4 0UD
 TELEPHONE: +44 (0)1462 443225
 TELEPHONE: +44 (0)1462 443226
 FAX: +44 (0)1462 443311
 EMAIL: sales@wask-uk.com
www.wask-uk.com



FM 00311 EMS 553775

- Designed and manufactured under quality management systems in accordance with BS EN ISO 9001.

Every effort has been made to ensure that the information contained in this publication is accurate at the time of publishing. Crane Ltd assumes no responsibility or liability for typographical errors or omissions or for any misinterpretation of the information within the publication and reserves the right to change without notice.

W_CMTEG_0121_V1