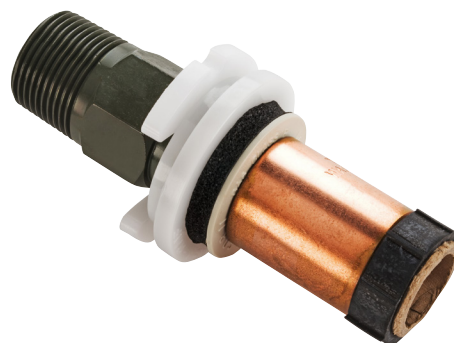




Crimp Semi-Concealed Meter Box Adaptor

AJ Series



APPLICATION

Provides a high strength transition fitting for a polyethylene gas service pipe to a Semi-Concealed Meter Box installed in the ground for connection to the customer ECV and meter installation.

DESCRIPTION

Comprising a Crimp mechanical fitting incorporating a bulkhead Bush & C-clip connection to the Meter Box and terminating in a Male BSPT thread. A rubber Bush is supplied to support the PVC Bend below the box. Suitable for low and medium pressure gas meter installations.

CONSTRUCTION

- Body (1): Steel
- C-Clip (2): Engineering plastic
- Meter Box Bush (3): Engineering plastic
- Insulation Washer (4) & (6): Engineering plastic
- Crimp Ring (7): Copper – annealed
- GRP Bush (8) & Bush Seal (5): EPDM Rubber
- Packing Tube (9): Cardboard
- Corrosion protection: Heavy Duty Zinc electro plated

INSTALLATION

The Crimp joint should be made using the correct WASK Crimp before the fitting is installed in the Meter Box. The C-Clip is removed to allow the fitting to be installed in all types of Semi-Concealed boxes, then snapped back in to place to retain the fitting.

SPECIFICATION

Meets GIS/PL3:2014 requirements, BSI Kite Mark certified KM587336.

Maximum Operating Pressure (MOP) = 5.5 Bar.

Every effort has been made to ensure that the information contained in this publication is accurate at the time of publishing. Crane Ltd assumes no responsibility or liability for typographical errors or omissions or for any misinterpretation of the information within the publication & reserves the right to change without notice.

PE X STEEL SIZES

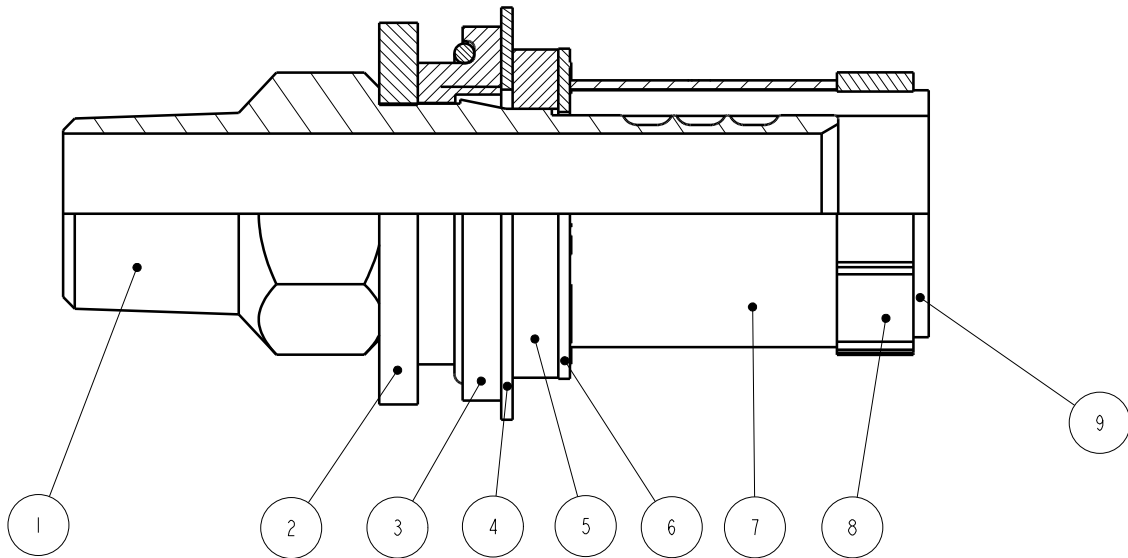
Available in sizes from 20mm to 32mm with 3/4" Male BSPT threads.

SIZE = PE x NOMINAL OUTLET THREAD DIAMETER

SIZE	L1	L2	D1	D2
20 SDR9 x 3/4"	53	100	20	3/4" BSPT
25 SDR11 x 3/4"	53	100	25	3/4" BSPT
32 SDR11 x 3/4"	55	104	32	3/4" BSPT

DIMENSIONS

Dimension shown in mm.



To visit our Video Library go to:
www.youtube.com/user/CraneBSU



46-48 WILBURY WAY, HITCHIN,
 HERTFORDSHIRE, SG4 0UD
 TELEPHONE: +44 (0)1462 443225
 TELEPHONE: +44 (0)1462 443226
 FAX: +44 (0)1462 443311
 EMAIL: sales@wask-uk.com
www.wask-uk.com



FM 00311 EMS 553775

• Designed and manufactured under quality management systems in accordance with BS EN ISO 9001.

Every effort has been made to ensure that the information contained in this publication is accurate at the time of publishing. Crane Ltd assumes no responsibility or liability for typographical errors or omissions or for any misinterpretation of the information within the publication and reserves the right to change without notice.

W_CSCMBA_0121_V1