



# Crimp Soil Stack Bend

## AH Series

### APPLICATION

Provides a high strength, offset coupling for polyethylene gas service pipes incorporating a coated steel, double swan neck Body to enable the service pipe to pass over Soil Pipes, electrical trunking and other architectural features found in above ground installations.

### DESCRIPTION

Comprising a double ended Crimp mechanical fitting with integral Bracket for site assembly in heavy duty Zinc coated finish (\*) for riser applications. A rubber Bush and Shroud is supplied to support the GRP cover tube over the PE pipe.

Suitable for low and medium pressure installations.

### CONSTRUCTION

- Body & Bracket (1): Steel
- Insulation Washer (2): Engineering plastic
- Crimp Ring (4): Copper – annealed
- GRP Bush (5): EPDM Rubber
- GRP Shroud (if fitted): TPE Rubber
- Packing Tube (3): Cardboard
- Corrosion protection: Zinc electro plated

### INSTALLATION

The Crimp joints should be made using the correct WASK Crimp tooling after the fitting has been inserted in to both pipes and correctly aligned.

### SPECIFICATION

Meets GIS/PL3:2014 requirements, BSI Kite Mark certified KM587336.

Maximum Operating Pressure (MOP) = 5.5 Bar.



Every effort has been made to ensure that the information contained in this publication is accurate at the time of publishing. Crane Ltd assumes no responsibility or liability for typographical errors or omissions or for any misinterpretation of the information within the publication & reserves the right to change without notice.

**PE X PE SIZES**

Available in sizes from 25mm to 63mm.

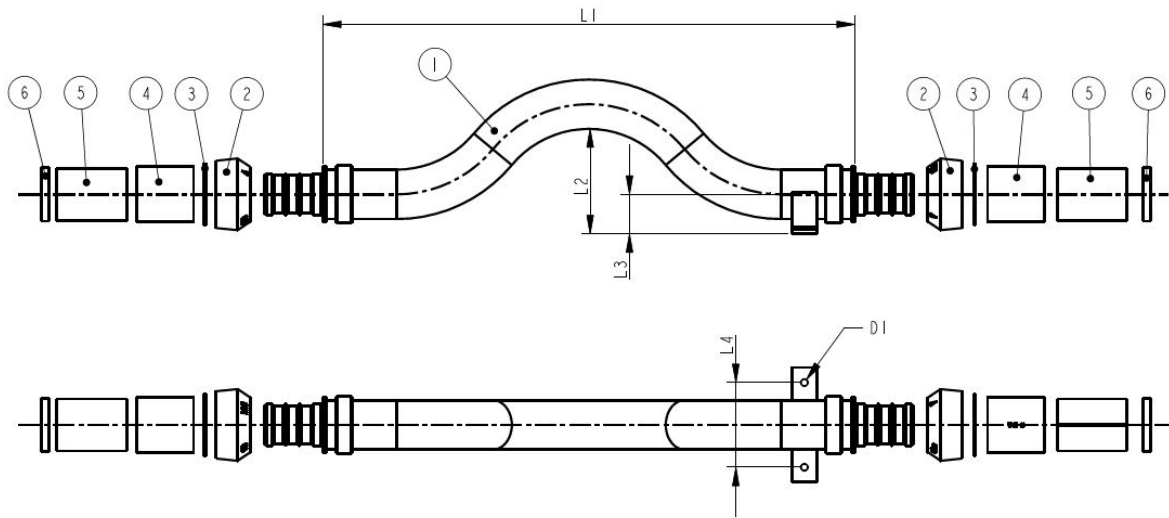
**DIMENSIONS**

Dimension shown in mm.

SIZE = PE x PE DIAMETERS					
SIZE	D1	L1	L2	L3	FINISH
25 SDR11	25	See Below**			HD ZINC 125µm *
32 SDR11	32				HD ZINC 125µm *
63 SDR11	63				HD ZINC 125µm *

\* Available in Grey (Natural Zinc) or Black painted option.

\*\* Heavy Duty Zinc coated types are also available with offsets (L2) in 10mm increments from 118mm to 218mm. Refer to factory for details of L1 dimensions.



To visit our Video Library go to:  
[www.youtube.com/user/CraneBSU](http://www.youtube.com/user/CraneBSU)



46-48 WILBURY WAY, HITCHIN,  
 HERTFORDSHIRE, SG4 0UD  
 TELEPHONE: +44 (0)1462 443225  
 TELEPHONE: +44 (0)1462 443226  
 FAX: +44 (0)1462 443311  
 EMAIL: [sales@wask-uk.com](mailto:sales@wask-uk.com)  
[www.wask-uk.com](http://www.wask-uk.com)



FM 00311 EMS 553775

- Designed and manufactured under quality management systems in accordance with BS EN ISO 9001.

Every effort has been made to ensure that the information contained in this publication is accurate at the time of publishing. Crane Ltd assumes no responsibility or liability for typographical errors or omissions or for any misinterpretation of the information within the publication and reserves the right to change without notice.

W\_CSSB\_0121\_v1