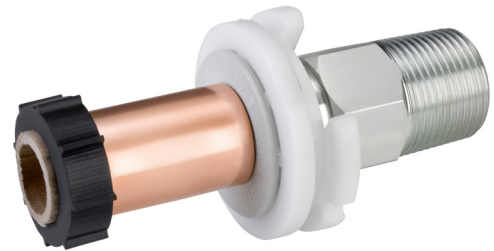




# Crimp Standard Meter Box Adaptor

AJ Series



## APPLICATION

Provides a high strength transition fitting for a polyethylene gas service pipe to a Meter Box installed above ground for connection to the customer ECV and meter installation.

## DESCRIPTION

Comprising a Crimp mechanical fitting which incorporates a bulkhead Bush and snap on C-Clip connection to the Meter Box terminating in a Male BSPT thread. A rubber GRP Bush is supplied to support the GRP cover tube over the PE pipe.

Suitable for low and medium pressure gas meter installations.

## CONSTRUCTION

- Body (1): Steel or Brass\* \*
- C-Clip (2): Engineering plastic
- Meter Box Bush (3): Engineering plastic
- Insulation Washer (4): Engineering plastic
- Crimp Ring (5): Copper – annealed
- GRP Bush (6): EPDM Rubber
- Packing Tube (7): Cardboard
- Corrosion protection: Zinc electro plated.

## INSTALLATION

The Crimp joint should be made using the correct WASK Crimp tool before the fitting is installed in the Meter Box. The C-Clip is removed to allow the fitting to be installed in Inset or Recessed type boxes, then snapped back in to place to retain the fitting. For Surface mounted box the fitting can be slid in to place without removing the C-Clip. After assembly the GRP cover tube should be located on the GRP Bush provided.

Every effort has been made to ensure that the information contained in this publication is accurate at the time of publishing. Crane Ltd assumes no responsibility or liability for typographical errors or omissions or for any misinterpretation of the information within the publication & reserves the right to change without notice.

**SPECIFICATION**

Meets GIS/PL3:2014 requirements, BSI Kite Mark certified KM587336.  
 Maximum Operating Pressure (MOP) = 5.5 Bar.

**PE X STEEL SIZES**

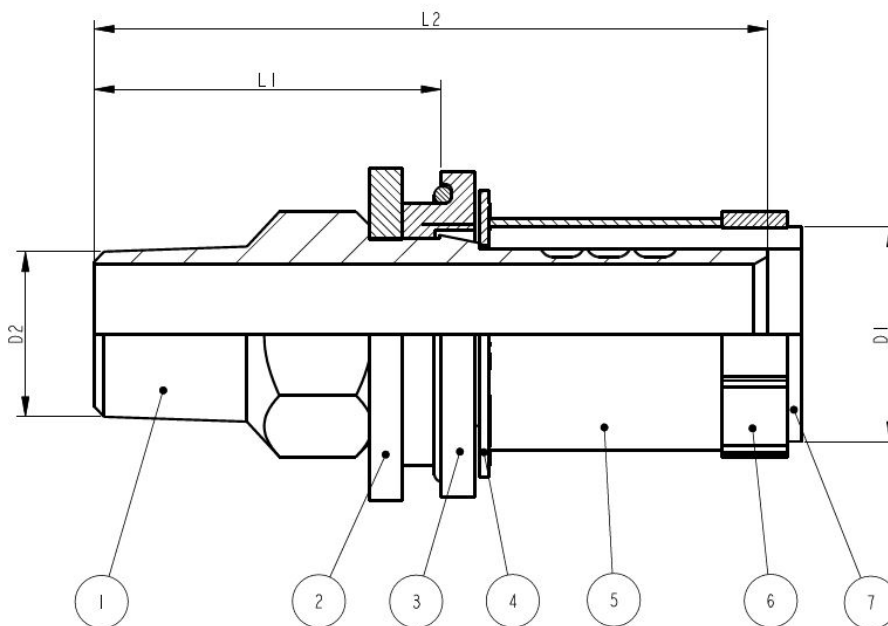
Available in sizes from 16mm to 32mm with threads 1/2" BSPT to 1" BSPT.

SIZE = PE x NOMINAL OUTLET THREAD DIAMETER				
SIZE	L1	L2	D1	D2
16 SDR7 x 1/2" *	52	82	16	1/2" BSPT
20 SDR9 x 3/4"	52	94	20	3/4" BSPT
25 SDR11 x 3/4"	52	94	25	3/4" BSPT
32 SDR11 x 3/4"	55	98	32	3/4" BSPT
32 SDR11 x 1"	55	98	32	1" BSPT

\*\*Note 16mm not available with Brass Body.

**DIMENSIONS**

Dimension shown in mm.



To visit our Video Library go to:  
[www.youtube.com/user/CraneBSU](http://www.youtube.com/user/CraneBSU)



46-48 WILBURY WAY, HITCHIN,  
 HERTFORDSHIRE, SG4 0UD  
 TELEPHONE: +44 (0)1462 443225  
 TELEPHONE: +44 (0)1462 443226  
 FAX: +44 (0)1462 443311  
 EMAIL: [sales@wask-uk.com](mailto:sales@wask-uk.com)  
[www.wask-uk.com](http://www.wask-uk.com)



FM 00311 EMS 553775

• Designed and manufactured under quality management systems in accordance with BS EN ISO 9001.

Every effort has been made to ensure that the information contained in this publication is accurate at the time of publishing. Crane Ltd assumes no responsibility or liability for typographical errors or omissions or for any misinterpretation of the information within the publication and reserves the right to change without notice.

W\_CSMBA\_0121\_V1