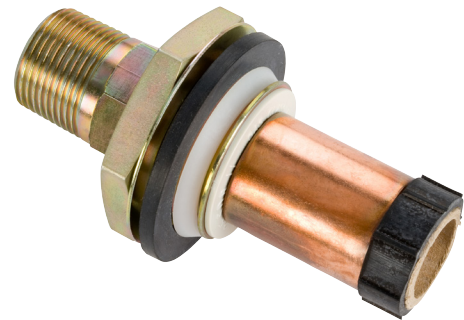




Crimp Top Entry Meter Box Adaptor

AJ Series



APPLICATION

Provides a high strength transition fitting for a polyethylene gas service pipe to a Meter Box installed above ground which has had the service pipe pre-installed within a service duct for connection to the customer ECV and meter installation.

DESCRIPTION

Comprising a Crimp mechanical fitting incorporating a special bulkhead connection with a Spring Ring that allows the fitting to be built within the Meter Box and then snapped in to position. The bulkhead connection features a Back Nut, Washer and Seal configuration to fasten the fitting in place. The fitting terminates with a Male BSPT thread. A rubber Bush is supplied to support the GRP cover tube over the PE pipe. Suitable for low and medium pressure gas meter installations.

CONSTRUCTION

- Body (1): Steel
- Back Nut (2) & Washer (3): Steel
- Meter Box Seal (4): IIR Rubber
- Spring Ring (5): Engineering plastic
- Insulation Washer (6): Engineering plastic
- Crimp Ring (7): Copper – annealed
- GRP Bush (8): EPDM Rubber
- Packing Tube (9): Cardboard
- Corrosion protection: Zinc electro plated

Every effort has been made to ensure that the information contained in this publication is accurate at the time of publishing. Crane Ltd assumes no responsibility or liability for typographical errors or omissions or for any misinterpretation of the information within the publication & reserves the right to change without notice.

INSTALLATION

The Crimp joint should be made within the Meter Box using the correct WASK Crimp before the fitting is secured in the Meter Box, note the ECV can be connected before this to align the lever as required. The Back Nut is loosened to allow the fitting to be inserted in Inset or Recessed type boxes, then tightened once the Spring Ring has snapped in to place to secure the fitting.

SIZE = PE x NOMINAL OUTLET THREAD DIAMETER				
SIZE	L1	L2	D1	D2
20 SDR9 x 3/4"	53	93	20	3/4" BSPT
25 SDR11 x 3/4"	53	93	25	3/4" BSPT
32 SDR11 x 3/4"	55	95	32	3/4" BSPT

SPECIFICATION

Meets GIS/PL3:2014 requirements, BSI Kite Mark certified KM587336.

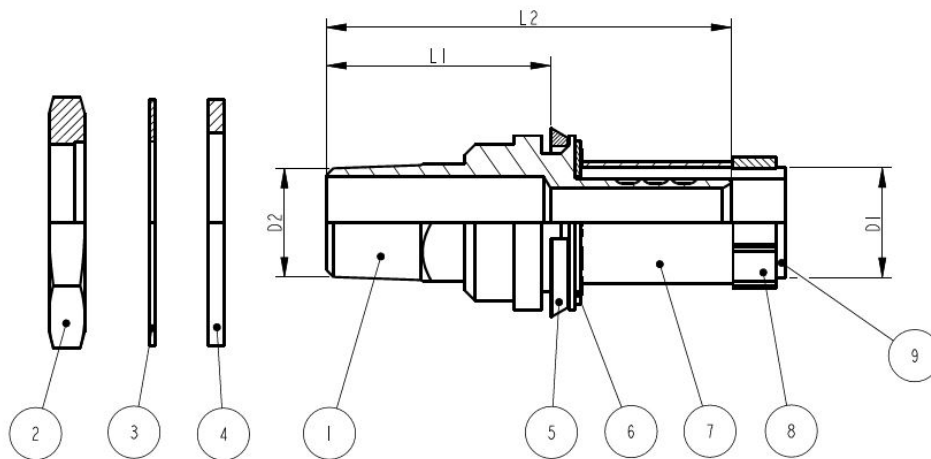
Maximum Operating Pressure (MOP) = 5.5 Bar.

PE X STEEL SIZES

Available in sizes from 20mm to 32mm with 3/4" BSPT threads.

DIMENSIONS

Dimension shown in mm.



To visit our Video Library go to:
www.youtube.com/user/CraneBSU



46-48 WILBURY WAY, HITCHIN,
 HERTFORDSHIRE, SG4 0UD
 TELEPHONE: +44 (0)1462 443225
 TELEPHONE: +44 (0)1462 443226
 FAX: +44 (0)1462 443311
 EMAIL: sales@wask-uk.com
www.wask-uk.com



FM 00311 EMS 553775

• Designed and manufactured under quality management systems in accordance with BS EN ISO 9001.

Every effort has been made to ensure that the information contained in this publication is accurate at the time of publishing. Crane Ltd assumes no responsibility or liability for typographical errors or omissions or for any misinterpretation of the information within the publication and reserves the right to change without notice.

W_CTE MBA_0121_V1