



## Electro Fusion Bagging Saddles

### AC Series

#### APPLICATION

A PE fitting for connecting a polyethylene gas main to WASK Teeset® drilling equipment to enable flow stopping, bypass, purging and other under pressure operations via a 56mm hole cut in a pressurised gas main.

#### DESCRIPTION

Comprising a size specific, 40V electrofusion, top loading Saddle fitting complete with closure Cap and Expanding Stopper compatible with Teeset PE drilling and fitting equipment. They have standard 4.7mm connection terminals.

#### CONSTRUCTION

- Body (1): PE80 – GIS/PL2-1
- Cap (2): PE80
- O-Ring (3): NBR Rubber
- Plug (4): Steel
- Pipe Seal (5): NBR Rubber

#### INSTALLATION

Saddles are supplied suitable for site jointing by electro fusion method using an approved GIS/PL2-5 top loading clamp tool. They are bar coded and have common welding parameters across the whole size range, please refer to the PE fusion control box and your company codes of practice for details on the electro fusion welding procedure.

#### SPECIFICATION

Meets GIS/PL2-4:2014 requirements, BSI Kite Mark certified – KM650039.

Maximum Operating Pressure (MOP) = 2.0 Bar.



Every effort has been made to ensure that the information contained in this publication is accurate at the time of publishing. Crane Ltd assumes no responsibility or liability for typographical errors or omissions or for any misinterpretation of the information within the publication & reserves the right to change without notice.

**PE PIPE SIZES**

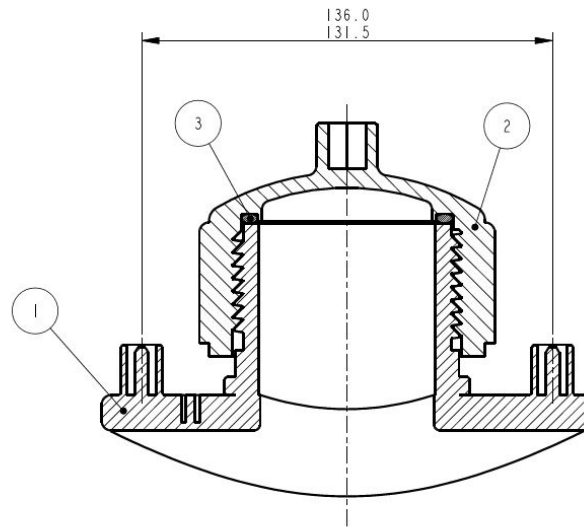
90mm SDR11 to 400mm SDR21 – CLASS B.

**DIMENSIONS**

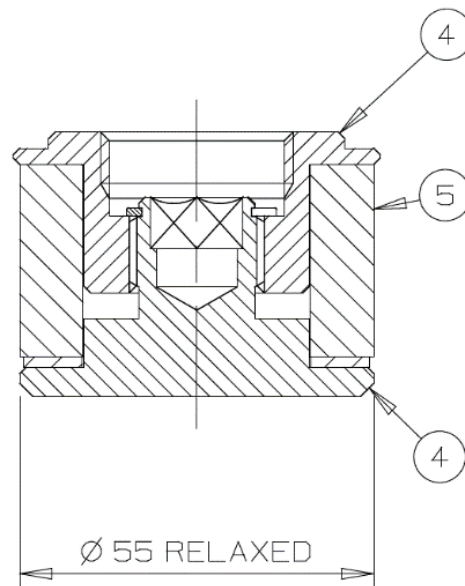
Details are for all PE & SDR types.

SIZE = PE DIAMETER			
SIZE	D1	PE80 SDR	PE100 SDR
90	90	11	N/A
110	110	11	N/A
125	125	11	N/A
160	160	11	N/A
180	180	11 & 17.6	N/A
225	225	11 & 17.6	N/A
250	250	11 & 17.6	N/A
280	280	11 & 17.6	N/A
315	315	11 & 17.6	N/A
355	355	17.6	21
400	400	17.6	21

**SADDLE**



**EXPANDING STOPPER**



To visit our Video Library go to:  
[www.youtube.com/user/CraneBSU](http://www.youtube.com/user/CraneBSU)



46-48 WILBURY WAY, HITCHIN,  
 HERTFORDSHIRE, SG4 0UD  
 TELEPHONE: +44 (0)1462 443225  
 TELEPHONE: +44 (0)1462 443226  
 FAX: +44 (0)1462 443311  
 EMAIL: [sales@wask-uk.com](mailto:sales@wask-uk.com)  
[www.wask-uk.com](http://www.wask-uk.com)



FM 00311 EMS 553775

- Designed and manufactured under quality management systems in accordance with BS EN ISO 9001.

Every effort has been made to ensure that the information contained in this publication is accurate at the time of publishing. Crane Ltd assumes no responsibility or liability for typographical errors or omissions or for any misinterpretation of the information within the publication and reserves the right to change without notice.

W\_EFBS\_0121\_V1