



## Flexgrip™ PE Adaptor (Male & Female)

CG Series



### APPLICATION

Provides a pressure and end-load bearing transition fitting for a polyethylene gas service pipe to a BSPT thread for below ground installations.

### DESCRIPTION

Comprising a Flexgrip™ PE mechanical compression joint which features a rubber sealing gasket and PE gripping Insert Stiffener, the fitting has a either a Male or Female BSPT threaded Body to connect to a BSPT threaded pipe, fitting or valve.

Suitable for low and medium pressure installations.

### CONSTRUCTION

- Body (1) & Nut (2): Malleable or SG Iron
- Thrust Washer (4): Steel or Engineering Plastic
- Insert Stiffener (5): Steel
- Gasket (3): NBR Rubber
- Corrosion protection: Light oil film – must be site protected

### INSTALLATION

The Flexgrip joint can be made using conventional tools after the fitting has been installed on to the threaded joint. The PE end should be disassembled and the parts placed on to the PE pipe, the Insert Stiffener can then be installed and then re-assembled in to the Body. Once tightened the fitting must have an approved site corrosion protection system applied after installation and pressure testing.

### SPECIFICATION

Meets GIS/PL3:2014 requirements, BSI Kite Mark certified KM587336.

Maximum Operating Pressure (MOP) = 5.5 Bar.

Every effort has been made to ensure that the information contained in this publication is accurate at the time of publishing. Crane Ltd assumes no responsibility or liability for typographical errors or omissions or for any misinterpretation of the information within the publication & reserves the right to change without notice.

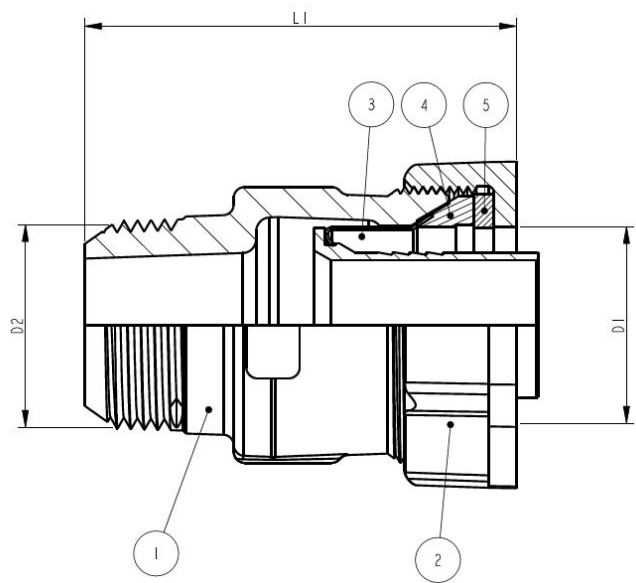
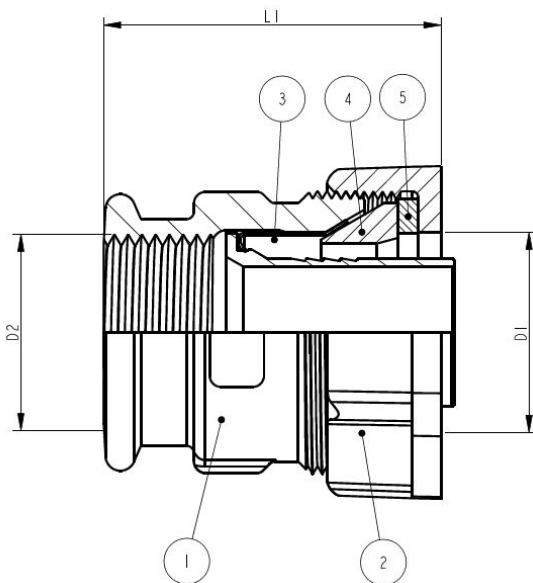
**PE X STEEL SIZES**

Available for PE sizes from 25mm to 63mm with threads ¾" BSPT to 2" BSPT.

**DIMENSIONS**

Dimension shown in mm.

| SIZE = NOMINAL DIAMETER |     |    |         |        |
|-------------------------|-----|----|---------|--------|
| SIZE                    | L1  | D1 | D2      | TYPE   |
| 25 SDR11 x ¾"           | 67  | 25 | ¾" BSPT | MALE   |
| 32 SDR11 x 1"           | 75  | 32 | 1" BSPT | MALE   |
| 63 SDR11 x 2"           | 101 | 63 | 2" BSPT | MALE   |
| 63 SDR13.6 x 2"         | 101 | 63 | 2" BSPT | MALE   |
| 25 SDR11 x ¾"           | 52  | 25 | ¾" BSPT | FEMALE |
| 32 SDR11 x 1"           | 55  | 32 | 1" BSPT | FEMALE |
| 63 SDR11 x 2"           | 79  | 63 | 2" BSPT | FEMALE |
| 63 SDR13.6 x 2"         | 79  | 63 | 2" BSPT | FEMALE |



To visit our Video Library go to:  
[www.youtube.com/user/CraneBSU](http://www.youtube.com/user/CraneBSU)



46-48 WILBURY WAY, HITCHIN,  
 HERTFORDSHIRE, SG4 0UD  
 TELEPHONE: +44 (0)1462 443225  
 TELEPHONE: +44 (0)1462 443226  
 FAX: +44 (0)1462 443311  
 EMAIL: [sales@wask-uk.com](mailto:sales@wask-uk.com)  
[www.wask-uk.com](http://www.wask-uk.com)



FM 00311 EMS 553775

- Designed and manufactured under quality management systems in accordance with BS EN ISO 9001.

Every effort has been made to ensure that the information contained in this publication is accurate at the time of publishing. Crane Ltd assumes no responsibility or liability for typographical errors or omissions or for any misinterpretation of the information within the publication and reserves the right to change without notice.

W\_FFEM&F\_1220\_V1