



MaxiCap® Blanking Cap

CT Series

APPLICATION

MaxiCap® is a combination fitting to produce a Blanking Cap for closing a plain ended gas pipe for underground purposes only.

DESCRIPTION

Comprises a special End Plate which converts a MaxiFit® Coupling in to a Blanking Cap, it is supplied pre-assembled ready to use.

The fitting can accommodate angular misalignment up to 3°.

The End Plate is supplied blank, but fittings can be specified with the End Plate threaded Female BSP for pressure testing purposes, threads in sizes ½" to 2" BSP can be supplied.

CONSTRUCTION

- Plate: SG Iron
- Corrosion protection: Rilsan Nylon coating

INSTALLATION

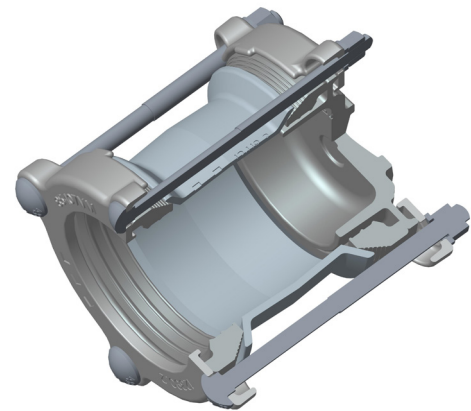
The MaxiFit should be installed following the instructions for the setting gap positioning and tightening of fasteners included with the product.

M12 Fasteners – Torque to 55-65 Nm.

This is a non end-load bearing fitting so end thrust must be supported.

SPECIFICATION

Maximum Operating Pressure (MOP) = 6.0 Bar.



Every effort has been made to ensure that the information contained in this publication is accurate at the time of publishing. Crane Ltd assumes no responsibility or liability for typographical errors or omissions or for any misinterpretation of the information within the publication & reserves the right to change without notice.

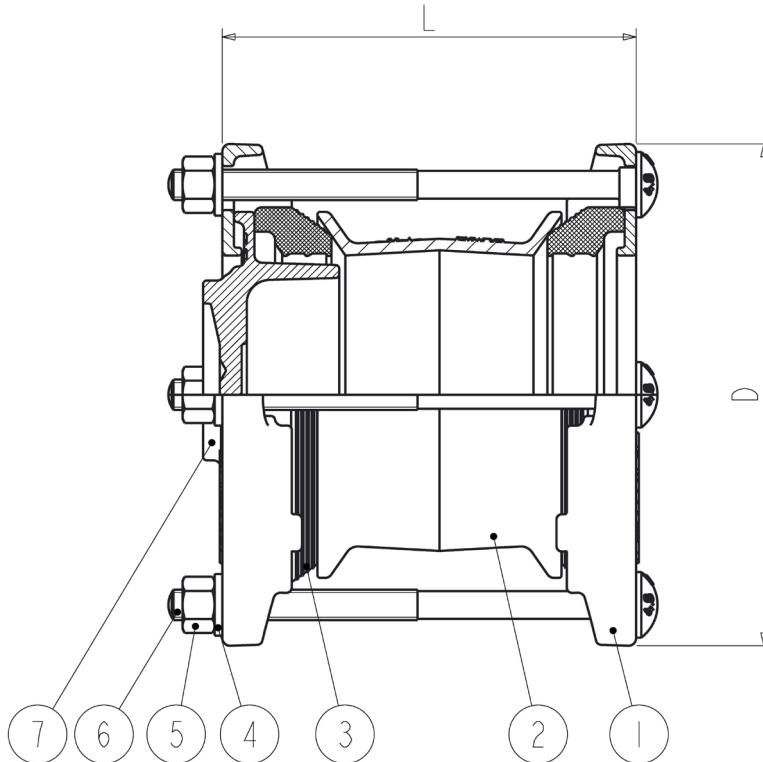
PIPE SIZES

Available in sizes from 50mm to 200mm.

DIMENSIONS

All dimensions in mm.

SIZE	SIZE = NOMINAL DIAMETER							
	PIPE Ø		L	A	T	M	SET GAP	
	MIN	MAX					MIN	MAX
50 (2")	57	74	190	95	4.5	155	20	40
65 (2½")	63	85	190	95	4.5	174	20	40
80 (3")	85	107	190	95	4.5	196	20	40
100 (4")	107	132	190	95	4.5	225	20	40
125 (5")	132	158	190	95	5	255	20	40
150 (6")	158	184	190	95	5	281	20	40
200 (8")	218	244	230	130	5	343	25	50



To visit our Video Library go to:
www.youtube.com/user/CraneBSU



46-48 WILBURY WAY, HITCHIN,
 HERTFORDSHIRE, SG4 0UD
 TELEPHONE: +44 (0)1462 443225
 TELEPHONE: +44 (0)1462 443226
 FAX: +44 (0)1462 443311
 EMAIL: sales@wask-uk.com
www.wask-uk.com



FM 00311 EMS 553775

- Designed and manufactured under quality management systems in accordance with BS EN ISO 9001.

Every effort has been made to ensure that the information contained in this publication is accurate at the time of publishing. Crane Ltd assumes no responsibility or liability for typographical errors or omissions or for any misinterpretation of the information within the publication and reserves the right to change without notice.

W_MBC_0121_v1