



## PECAT® Base Plate Transition

### AD Series

#### APPLICATION

Provides a high strength transition fitting allowing connection of polyethylene gas pipe above ground within a metering installation or to an external steel riser.

#### DESCRIPTION

Comprising a PECAT® mechanical joint, factory assembled with straight length of PE pipe terminating with a corresponding BSPT threaded outlet. The PE pipe is protected inside a coated steel sleeve fitted with a rectangular, drilled base plate, the adaptor Body is mechanically locked to this sleeve to prevent rotation.

#### CONSTRUCTION

- Body (2) and Base Plate (1): Mild Steel
- PE (3): GIS/PL2-2
- Corrosion protection: Zinc electro-plate & Epoxy Polyester coating

#### INSTALLATION

Fittings are supplied suitable for site jointing by electro fusion only. Please refer to the PE pipe or fitting manufacturer's instructions for details on electro fusion welding procedures.

#### SPECIFICATION

Meets GIS/PL3:2014 requirements, BSI Kite Mark accredited - KM535530.

Maximum Operating Pressure (MOP) = 5.5 Bar (PE80 SDR11).

#### PE SIZES

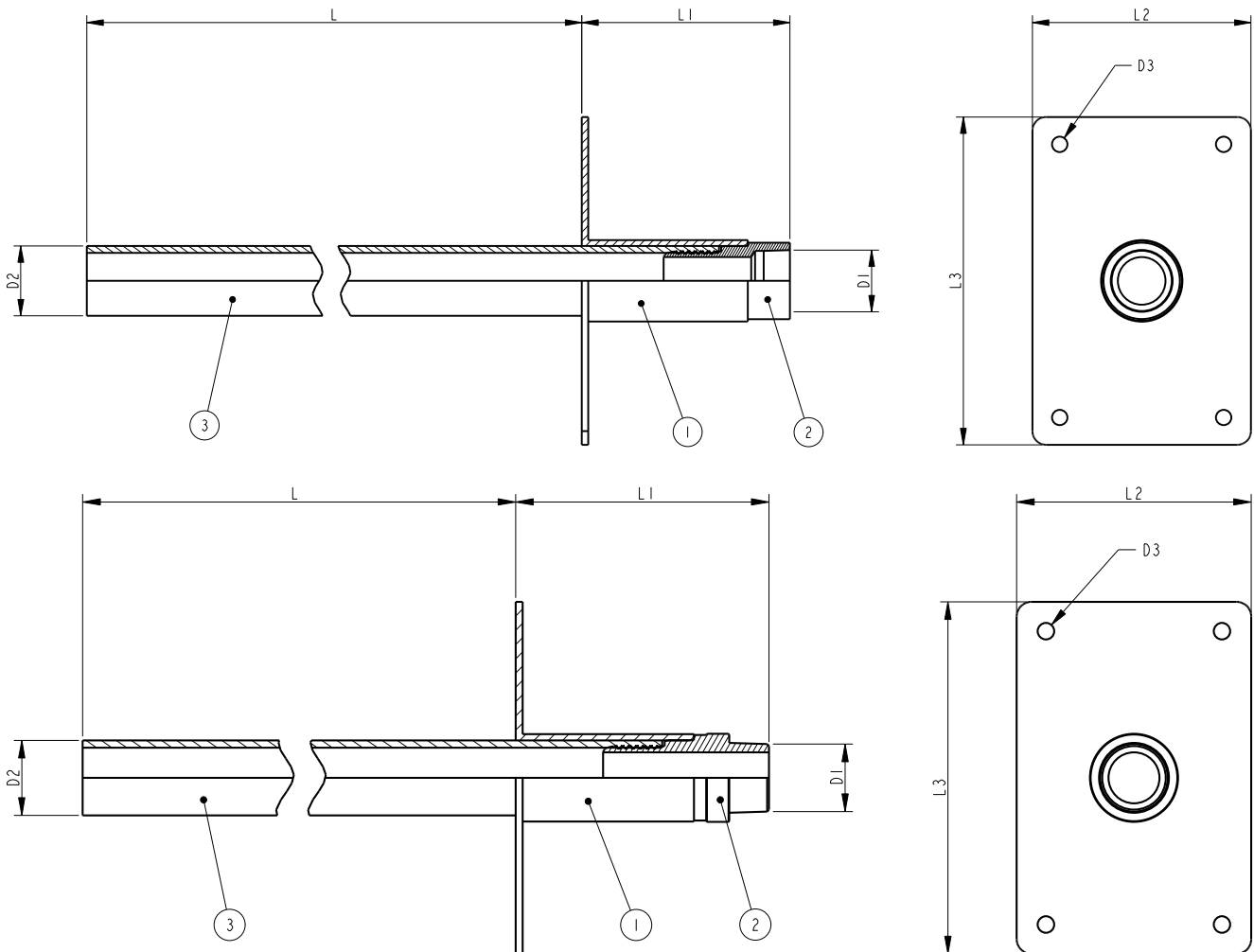
Fitting available in 63mm SDR11 only.

#### DIMENSIONS

All dimensions are in mm.

Every effort has been made to ensure that the information contained in this publication is accurate at the time of publishing. Crane Ltd assumes no responsibility or liability for typographical errors or omissions or for any misinterpretation of the information within the publication & reserves the right to change without notice.





| SIZE = PE DIAMETER x OUTLET SIZE |     |     |     |     |     |    |    |
|----------------------------------|-----|-----|-----|-----|-----|----|----|
| SIZE                             | L   | L1  | L2  | L3  | D1  | D2 | D3 |
| 63 x 2" FEMALE                   | 880 | 190 | 200 | 300 | 2"  | 63 | 14 |
| 63 x 1½" FEMALE                  | 880 | 156 | 200 | 300 | 1½" | 63 | 14 |
| 63 x 2" MALE                     | 880 | 216 | 200 | 300 | 2"  | 63 | 14 |



To visit our Video Library go to:  
[www.youtube.com/user/CraneBSU](http://www.youtube.com/user/CraneBSU)



46-48 WILBURY WAY, HITCHIN,  
 HERTFORDSHIRE, SG4 0UD  
 TELEPHONE: +44 (0)1462 443225  
 TELEPHONE: +44 (0)1462 443226  
 FAX: +44 (0)1462 443311  
 EMAIL: [sales@wask-uk.com](mailto:sales@wask-uk.com)  
[www.wask-uk.com](http://www.wask-uk.com)



FM 00311 EMS 553775

- Designed and manufactured under quality management systems in accordance with BS EN ISO 9001.

Every effort has been made to ensure that the information contained in this publication is accurate at the time of publishing. Crane Ltd assumes no responsibility or liability for typographical errors or omissions or for any misinterpretation of the information within the publication and reserves the right to change without notice.

W\_PBPT\_0121\_v1