



PECAT® Factory Entry Elbow

AG Series

APPLICATION

Provides a high strength transition fitting for connecting polyethylene gas pipe to a building via a steel 90° elbow and through wall pipe for an above ground connection.

DESCRIPTION

Comprising a PECAT® mechanical joint, factory assembled with straight length of PE pipe with a GRP protective cover sleeve, a through wall steel outlet with tight fit PE cover terminating with a plain ended tube for on-site welding.

CONSTRUCTION

- Body (1) and Sleeve (2): Steel
- Outlet pipe cover (6): PE
- Inlet pipe (3): PE to GIS/PL2-2
- PE Cover tube(5): GRP
- Wall Plate (7): Steel
- Cover tube support (3): EPDM Rubber
- Corrosion protection: Zinc electro-plate & Epoxy/Polyester coating.

INSTALLATION

Factory Entry Elbows supplied suitable for site jointing by electro fusion only. Adjustment to entry height can be made by cutting PE & GRP tubes on site, no adjustment to through wall length is possible, see table below for available options.

Please refer to the PE fitting manufacturer's instructions for details on electro fusion welding procedures.

SPECIFICATION

Meets GIS/PL3:2014 requirements, BSI Kite Mark certified - KM535530.

Maximum Operating Pressure (MOP) = 2.0 Bar.



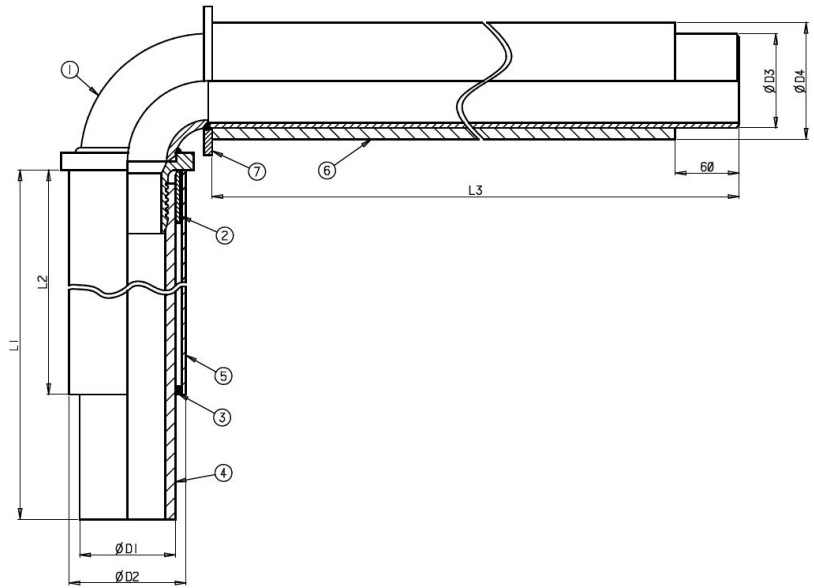
Every effort has been made to ensure that the information contained in this publication is accurate at the time of publishing. Crane Ltd assumes no responsibility or liability for typographical errors or omissions or for any misinterpretation of the information within the publication & reserves the right to change without notice.

PE X OUTLET SIZES

90mm SDR11 x 3" to 180mm SDR17.6 x 6".

DIMENSIONS

Note: consult the factory for sizes not shown in table below.



SIZE = PE DIAMETER x OUTLET SIZE & TYPE								
SIZE	D1	D2	D3	D4	L1	L2	L3	OUTLET
90 SDR11 x 3"	90	110	88.9	112	1000	750	345	PLAIN
90 SDR11 x 3"	90	110	88.9	112	1000	750	500	PLAIN
90 SDR11 x 3"	90	110	88.9	112	1000	750	610	PLAIN
90 SDR11 x 3"	90	110	88.9	112	2000	1500	500	PLAIN
90 SDR11 x 3"	90	110	88.9	112	2000	1500	610	PLAIN
125 SDR11 x 4"	125	152	114.3	142	1000	750	345	PLAIN
125 SDR11 x 4"	125	152	114.3	142	1000	750	610	PLAIN
125 SDR11 x 4"	125	152	114.3	142	2000	1500	610	PLAIN
180 SDR17.6 x 6"	180	208	168.3	203	1000	750	345	PLAIN
180 SDR17.6 x 6"	180	208	168.3	203	1000	750	610	PLAIN
180 SDR17.6 x 6"	180	208	168.3	203	2000	1500	610	PLAIN



To visit our Video Library go to:
www.youtube.com/user/CraneBSU



46-48 WILBURY WAY, HITCHIN,
 HERTFORDSHIRE, SG4 0UD
 TELEPHONE: +44 (0)1462 443225
 TELEPHONE: +44 (0)1462 443226
 FAX: +44 (0)1462 443311
 EMAIL: sales@wask-uk.com
www.wask-uk.com



FM 00311 EMS 553775

- Designed and manufactured under quality management systems in accordance with BS EN ISO 9001.

Every effort has been made to ensure that the information contained in this publication is accurate at the time of publishing. Crane Ltd assumes no responsibility or liability for typographical errors or omissions or for any misinterpretation of the information within the publication and reserves the right to change without notice.

W_PFEEL_0121_v1