



PECAT® Factory Entry Elbow Flanged

AG Series

APPLICATION

Provides a high strength transition fitting for connecting polyethylene gas pipe to a building via a steel 90° elbow and through wall pipe for an above ground connection.

DESCRIPTION

Comprising a PECAT® mechanical joint, factory assembled with straight length of PE pipe with a GRP protective cover sleeve, a through wall steel outlet with tight fit PE cover terminating with a corresponding NP16 Split Flange assembly.

CONSTRUCTION

- Body (1), Sleeve (2) & Retainer (9): Steel
- Outlet pipe cover (6): PE
- Inlet pipe (4): PE to GIS/PL2-2
- Flange (8) & Bracket (7): SG Iron
- PE Cover tube (5): GRP
- O-Ring (10): NBR rubber
- Cover tube support (3): EPDM Rubber
- Corrosion protection: Zinc plate & Epoxy/Polyester coating.

INSTALLATION

Flanged Factory Entry Elbows supplied suitable for site jointing by electro fusion only. Adjustment to entry height can be made by cutting PE & GRP tubes on site, no adjustment to through wall length is possible, see table below for available options.

Please refer to the PE fitting manufacturer's instructions for details on electro fusion welding procedures.



Every effort has been made to ensure that the information contained in this publication is accurate at the time of publishing. Crane Ltd assumes no responsibility or liability for typographical errors or omissions or for any misinterpretation of the information within the publication & reserves the right to change without notice.

SPECIFICATION

Meets GIS/PL3:2014 requirements,
BSI Kite Mark certified - KM535530.
Maximum Operating Pressure (MOP) =
2.0 Bar.

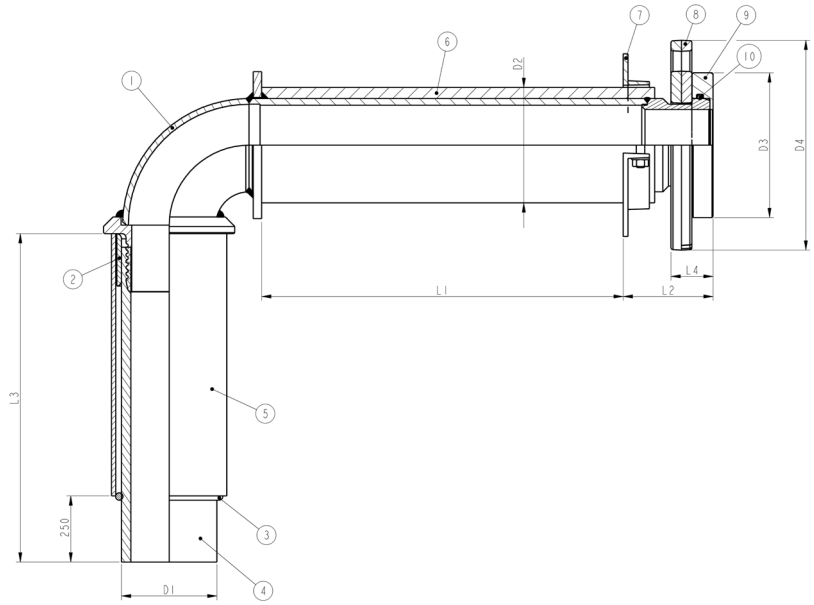
PE X OUTLET SIZES

90mm SDR11 x 80 NP16 to
180mm SDR17.6 x 150 NP16.

DIMENSIONS

Dimensions in mm.

Note: consult the factory for sizes not
shown in table below.



SIZE = PE DIAMETER x OUTLET FLANGE SIZE (NP16)									
SIZE	D1	D2	Ø CORE HOLE (MIN)	D3	D4	L1	L2	L3	L4
90/11 x 80	90	112	115	130	200	345	88	1000	40
90/11 x 80	90	112	115	130	200	345	88	2000	40
90/11 x 80	90	112	115	130	200	500	88	1000	40
90/11 x 80	90	112	115	130	200	500	88	2000	40
90/11 x 80	90	112	115	130	200	610	88	1000	40
90/11 x 80	90	112	115	130	200	610	88	2000	40
125/11 x 100	125	143	145	158	220	345	91	1000	42
125/11 x 100	125	143	145	158	220	345	91	2000	42
125/11 x 100	125	143	145	158	220	610	91	1000	42
125/11 x 100	125	143	145	158	220	610	91	2000	42
180/17.6 x 150	180	205	210	212	285	345	106	1000	44
180/17.6 x 150	180	205	210	212	285	345	106	2000	44
180/17.6 x 150	180	205	210	212	285	610	106	1000	44
180/17.6 x 150	180	205	210	212	285	610	106	2000	44



To visit our Video Library go to:
www.youtube.com/user/CraneBSU



46-48 WILBURY WAY, HITCHIN,
HERTFORDSHIRE, SG4 0UD
TELEPHONE: +44 (0)1462 443225
TELEPHONE: +44 (0)1462 443226
FAX: +44 (0)1462 443311
EMAIL: sales@wask-uk.com
www.wask-uk.com



FM 00311 EMS 553775

• Designed and manufactured under quality management systems in accordance with BS EN ISO 9001.

Every effort has been made to ensure that the information contained in this publication is accurate at the time of publishing. Crane Ltd assumes no responsibility or liability for typographical errors or omissions or for any misinterpretation of the information within the publication and reserves the right to change without notice.

W_PEEEF_0121_V1