



PECAT® Flange Adaptor

BN Series



APPLICATION

Provides a high strength transition fitting for connecting polyethylene gas pipe to flanged apparatus including pipes, valves and flanged equipment.

DESCRIPTION

Comprising a PECAT® mechanical joint, factory assembled with straight length of PE pipe terminating with a corresponding PN16 raised face flange.

CONSTRUCTION

- Body (1) and Sleeve (3): Steel or SG Iron
- Flange (2): Steel
- PE (4): GIS/PL2-2 or PL2-8
- Corrosion protection: Zinc electro-plate or Rilsan Nylon coating

INSTALLATION

Flange adaptors are supplied suitable for site jointing by butt-fusion or electro fusion. Loose backing rings allow for easy alignment with mating flanges.

Please refer to the PE pipe or fitting manufacturer's instructions for details on electro fusion and butt-fusion welding procedures.

SPECIFICATION

Meets GIS/PL3:2014 requirements, BSI Kite Mark certified - KM535530.

Maximum Operating Pressure (MOP) = 7.0 Bar.

PE X FLANGE SIZES

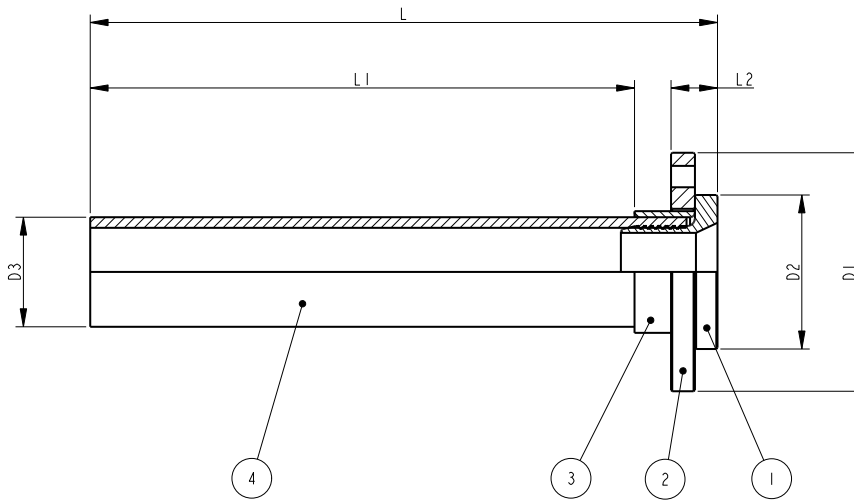
Straight, reducing and enlarging types are available in sizes from: 63mm SDR11 x DN50 to 630mm SDR21 x DN600

Every effort has been made to ensure that the information contained in this publication is accurate at the time of publishing. Crane Ltd assumes no responsibility or liability for typographical errors or omissions or for any misinterpretation of the information within the publication & reserves the right to change without notice.

DIMENSIONS

Note: consult the factory for intermediate sizes or combinations not shown below, alternative flange types/classes can also be supplied.

All dimensions in mm, standard PE pup lengths 0.5m up to 250mm diameter, 1.0m above.



SIZE = PE DIAMETER x NOMINAL FLANGE SIZE (PN16)						
SIZE	L MIN	L1 MIN	L2 MAX	D1 TYP	D2 TYP	D3 MIN
63 x 50	516	450	36	165	98	63
90 x 80	516	450	38	200	130	90
90 x 100	518	450	40	220	158	90
125 x 100	516	425	40	220	158	125
180 x 150	520	410	44	285	212	180
250 x 200	520	370	46	340	268	250
250 x 250	520	370	50	405	320	250
315 x 250	1022	850	50	405	320	315
315 x 300	1024	850	54	460	378	315
355 x 350	1026	800	60	520	438	355
400 x 400	1028	780	66	580	490	400
450 x 450	1030	780	72	640	550	450
500 x 500	1032	700	78	715	610	500
630 x 600	1032	700	86	840	725	630



To visit our Video Library go to:
www.youtube.com/user/CraneBSU



46-48 WILBURY WAY, HITCHIN,
 HERTFORDSHIRE, SG4 0UD
 TELEPHONE: +44 (0)1462 443225
 TELEPHONE: +44 (0)1462 443226
 FAX: +44 (0)1462 443311
 EMAIL: sales@wask-uk.com
www.wask-uk.com



FM 00311 EMS 553775

- Designed and manufactured under quality management systems in accordance with BS EN ISO 9001.

Every effort has been made to ensure that the information contained in this publication is accurate at the time of publishing. Crane Ltd assumes no responsibility or liability for typographical errors or omissions or for any misinterpretation of the information within the publication and reserves the right to change without notice.

W_PFA_1020_v1