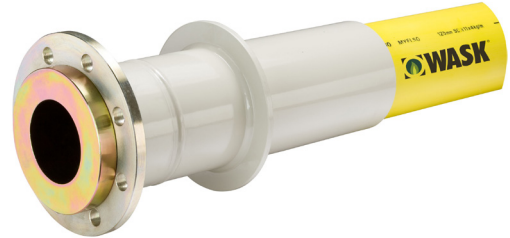




PECAT® Governor Riser (Puddle Flange)

AD Series



APPLICATION

Provides a high strength flanged transition fitting allowing connection of polyethylene gas pipe above ground within a governor or meter house installation.

DESCRIPTION

Comprising a PECAT® mechanical joint, factory assembled with straight length of PE pipe terminating with a corresponding PN16 raised face flange. The PE pipe is protected inside a coated steel sleeve fitted with a circular puddle flange, the flange adaptor Body is mechanically locked to this sleeve.

CONSTRUCTION

- Body (2) and Sleeve (1): Steel or SG Iron
- Flange (3): Mild steel
- PE (4): GIS/PL2-2 or PL2-8
- Corrosion protection: Zinc electro-plate & Epoxy Polyester coating.

INSTALLATION

Flange adaptors are supplied suitable for site jointing by electro fusion only. Loose backing flanges allow for easy alignment with mating flanges of flanged apparatus or valves.

Please refer to the PE pipe or fitting manufacturer's instructions for details on electro fusion welding procedures.

SPECIFICATION

Meets GIS/PL3:2014 requirements, BSI Kite Mark certified - KM535530.

Maximum Operating Pressure (MOP) = 7.0 Bar (PE100 SDR11).

Every effort has been made to ensure that the information contained in this publication is accurate at the time of publishing. Crane Ltd assumes no responsibility or liability for typographical errors or omissions or for any misinterpretation of the information within the publication & reserves the right to change without notice.

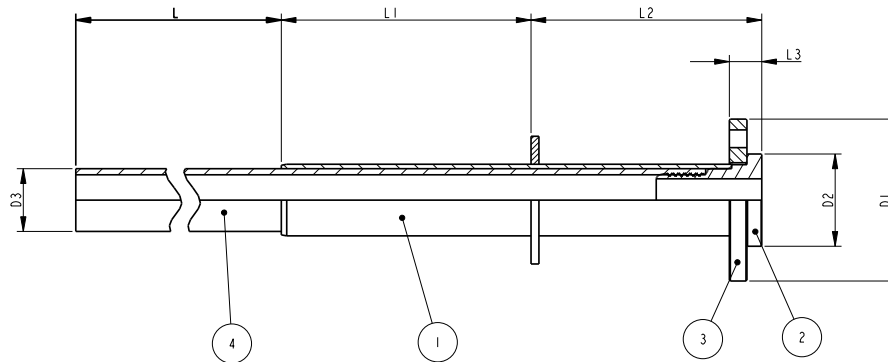
PE X FLANGE SIZES

Straight, reducing and enlarging types are available in sizes from 63mm SDR11 x DN50 to 500mm SDR21 x DN500.

DIMENSIONS

Note: consult the factory for intermediate sizes or combinations not shown below.

All dimensions are in mm for SDR11 types.



SIZE = PE DIAMETER x NOMINAL FLANGE SIZE (PN16)							
SIZE	L	L1	L2	L3 MAX	D1	D2	D3
63 x 50	570	265	230	36	165	98	63
90 x 80	575	245	215	38	200	130	90
90 x 100	575	245	215	40	220	158	90
125 x 100	575	245	220	40	220	158	125
125 x 150	575	245	224	44	285	212	125
180 x 150	575	245	220	44	285	212	180
180 x 200	575	245	222	46	340	268	180
250 x 200	560	260	360	46	340	268	250
250 x 250	560	260	230	50	405	320	250
315 x 250	525	350	290	50	405	320	315
315 x 300	525	350	290	54	460	378	315
355 x 300	575	290	360	54	460	378	315
400 x 400	575	244	246	66	580	490	400
450 x 450	575	238	252	72	640	550	450
500 x 500	575	390	280	66	580	490	400



To visit our Video Library go to:
www.youtube.com/user/CraneBSU



46-48 WILBURY WAY, HITCHIN,
 HERTFORDSHIRE, SG4 0UD
 TELEPHONE: +44 (0)1462 443225
 TELEPHONE: +44 (0)1462 443226
 FAX: +44 (0)1462 443311
 EMAIL: sales@wask-uk.com

www.wask-uk.com



FM 00311 EMS 553775

- Designed and manufactured under quality management systems in accordance with BS EN ISO 9001.

Every effort has been made to ensure that the information contained in this publication is accurate at the time of publishing. Crane Ltd assumes no responsibility or liability for typographical errors or omissions or for any misinterpretation of the information within the publication and reserves the right to change without notice.

W_PGR_0121_V1