



## PECAT® Valve Flange Adaptor

### BU Series

#### APPLICATION

Provides a high strength, below ground transition fitting for connecting polyethylene gas pipe to flanged valves and flanged equipment. The body has one or two integrated threaded or flanged side outlet ports for pressure point and rider/bypass connections.

#### DESCRIPTION

Comprising a PECAT® mechanical joint, factory assembled with straight length of PE pipe terminating with a corresponding PN16 raised face flange. Side outlets can be DN25 (1") or DN50 (2") depending on requirements. A blind ½" BSP socket is provided for fitting a sacrificial anode block.

#### CONSTRUCTION

- Body (1), Flange (2) and Sleeve (3): Steel or SG Iron
- PE (4): GIS/PL2-2 or PL2-8
- Corrosion protection: Zinc rich paint & Zinc plating (2)

#### INSTALLATION

Flange adaptors are supplied suitable for site jointing by butt-fusion or electro fusion. Loose backing rings allow for easy alignment with the main mating flange.

Please refer to the PE pipe or fitting manufacturer's instructions for details on electro fusion and butt-fusion welding procedures.

#### SPECIFICATION

Meets GIS/PL3:2014 requirements, BSI Kite Mark certified - KM535530.

Maximum Operating Pressure (MOP) = 7.0 Bar Class C or 2.0 Bar Class B.



Every effort has been made to ensure that the information contained in this publication is accurate at the time of publishing. Crane Ltd assumes no responsibility or liability for typographical errors or omissions or for any misinterpretation of the information within the publication & reserves the right to change without notice.

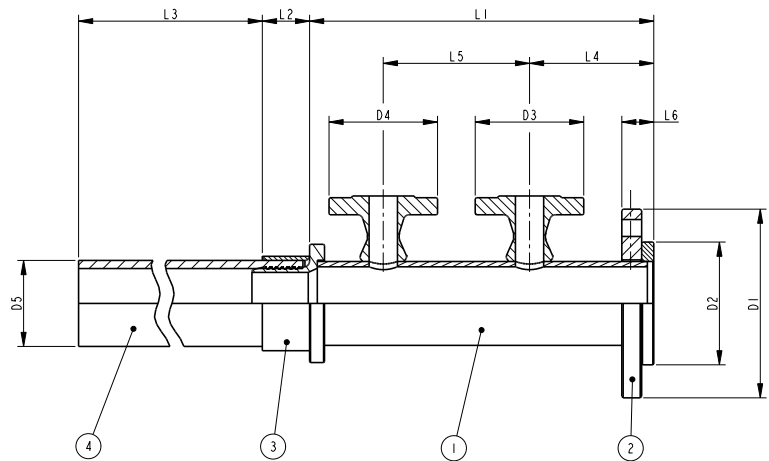
**PE X FLANGE SIZES**

Straight, reducing and enlarging types are available in sizes from 63mm SDR11 x DN50 to 630mm SDR21 x DN600.

**DIMENSIONS**

**Note:** consult the factory for intermediate sizes or combinations not shown below, alternative flange types/classes & lengths can also be supplied.

All dimensions in mm for SDR11 types, standard PE pup lengths 0.5m up to 250mm diameter, 1.0m above.



SIZE = PE DIAMETER x NOMINAL FLANGE SIZE (PN16)											
SIZE	L1 MIN	L2	L3	L4 TYP	L5 TYP	L6	D1	D2	D3 DN25	D4 DN50	D5 MIN
63 x 50	370	50	450	135	155	36	165	98	115	165	63
90 x 80	420	50	450	160	180	38	200	130	115	165	90
90 x 100	420	50	450	160	180	40	220	158	115	165	90
125 x 100	420	75	425	160	180	40	220	158	115	165	125
180 x 150	470	90	410	160	200	44	285	212	115	165	180
250 x 200	470	130	370	190	200	46	340	268	115	165	250
250 x 250	470	130	370	190	200	50	405	320	115	165	250
315 x 250	470	150	850	190	200	50	405	320	115	165	315
315 x 300	470	150	850	190	200	54	460	378	115	165	315
355 x 350	525	200	800	160	180	60	520	438	115	165	355
400 x 400	570	220	780	220	180	66	580	490	115	165	400
450 x 450	480	220	780	190	195	72	640	550	115	165	450
500/21 x 500	470	170	830	165	150	78	715	610	115	165	500
630/21 x 600	470	180	820	165	150	86	840	725	115	165	630



To visit our Video Library go to:  
[www.youtube.com/user/CraneBSU](http://www.youtube.com/user/CraneBSU)



46-48 WILBURY WAY, HITCHIN,  
 HERTFORDSHIRE, SG4 0UD  
 TELEPHONE: +44 (0)1462 443225  
 TELEPHONE: +44 (0)1462 443226  
 FAX: +44 (0)1462 443311  
 EMAIL: [sales@wask-uk.com](mailto:sales@wask-uk.com)  
[www.wask-uk.com](http://www.wask-uk.com)



FM 00311 EMS 553775

• Designed and manufactured under quality management systems in accordance with BS EN ISO 9001.

Every effort has been made to ensure that the information contained in this publication is accurate at the time of publishing. Crane Ltd assumes no responsibility or liability for typographical errors or omissions or for any misinterpretation of the information within the publication and reserves the right to change without notice.

W\_PVFA\_1020\_v1