



PECAT® Wall Mounted Adaptor

AD Series

APPLICATION

Provides a high strength transition fitting allowing connection of polyethylene gas pipe above ground to a steel pipe for an external steel riser installation.

DESCRIPTION

Comprising a PECAT® mechanical joint, factory assembled with straight length of PE pipe with a GRP protective cover tube, the Sleeve is fitted with brackets to enable attachment to the wall.

Outlets are female BSPT threaded, optional outlets are male BSPT, plain ended tube for welding or flanged, refer to factory for details.

The adaptor Body is mechanically locked to this Sleeve.

CONSTRUCTION

- Body (2) and Sleeve (1): Steel or SG Iron
- PE Cover tube (3): GRP
- Cover tube support (4): EPDM
- PE (5): GIS/PL2-2
- Corrosion protection: Zinc electro-plate & Epoxy Polyester coating.

INSTALLATION

Fittings supplied suitable for site jointing by electro fusion only.

Adjustment to fitting mounting height can be made by cutting PE & GRP tubes on site.

Please refer to the PE pipe or fitting manufacturer's instructions for details on electro fusion welding procedures.

SPECIFICATION

Meets GIS/PL3:2014 requirements, BSI Kite Mark certified - KM535530.

Maximum Operating Pressure (MOP) = 5.5 Bar (PE80 SDR11).



Every effort has been made to ensure that the information contained in this publication is accurate at the time of publishing. Crane Ltd assumes no responsibility or liability for typographical errors or omissions or for any misinterpretation of the information within the publication & reserves the right to change without notice.

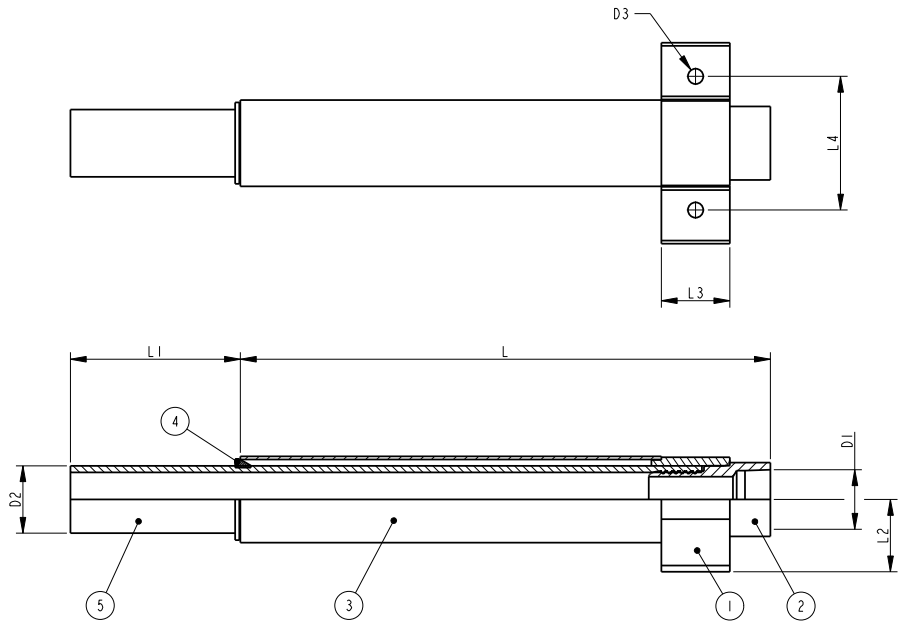
PE X OUTLET SIZES

Standard outlet is Female BSPT.

Sizes available 63mm SDR11 x 2" (DN50) to 180mm SDR17.6 x 6" (DN150).

DIMENSIONS

All dimensions are in mm.



SIZE = PE DIAMETER x NOMINAL SIZE							
SIZE	L	L1	L2	L3	L4	D1	D2
32 x 1"	1245	250	95	80	90	1" BSPT FEMALE	32
63 x 1½"	1270	250	100	65	130	1½" BSPT FEMALE	63
63 x 2"	1300	250	100	65	130	2" BSPT FEMALE	63
90 x 3"	1310	250	125	65	200	3" BSPT FEMALE	90
125 x 4"	1320	250	120	65	220	4" BSPT FEMALE	125
180 x 6"	1330	250	150	65	260	6" BSPT FEMALE	180



To visit our Video Library go to:
www.youtube.com/user/CraneBSU



46-48 WILBURY WAY, HITCHIN,
 HERTFORDSHIRE, SG4 0UD
 TELEPHONE: +44 (0)1462 443225
 TELEPHONE: +44 (0)1462 443226
 FAX: +44 (0)1462 443311
 EMAIL: sales@wask-uk.com
www.wask-uk.com



FM 00311 EMS 553775

• Designed and manufactured under quality management systems in accordance with BS EN ISO 9001.

Every effort has been made to ensure that the information contained in this publication is accurate at the time of publishing. Crane Ltd assumes no responsibility or liability for typographical errors or omissions or for any misinterpretation of the information within the publication and reserves the right to change without notice.

W_PVWMA_1020_V1