



## Pressure Drilling Saddle

### AA Series

#### APPLICATION

Provides a reinforcing Saddle fitting to allow the threading of metallic gas mains with thin walls or for non-metallic gas mains to enable installation of EMID closure plugs.

#### DESCRIPTION

Comprising a low profile 2-part Saddle and Strap with a rubber Gasket to make a gas tight seal between the Saddle and surface of the main. Under pressure drilling machines can be mounted over the Saddle boss to enable drilling and tapping operations to be completed.

#### CONSTRUCTION

- Saddle (1) and Strap (2): Malleable Iron or SG Iron
- Gasket (3): NBR Rubber
- Fasteners (4): Steel
- Corrosion protection: Rilsan Nylon

#### INSTALLATION

For site installation prior to using gas under pressure drilling machines conforming to GIS/E1 specification such as WASK Teeset®. The Gasket should be located below the boss on the Saddle and the fasteners tightened down evenly.

M12 Fasteners – Torque to 55-65 Nm.

Fasteners must have an approved site corrosion protection system applied after installation.

#### SPECIFICATION

Aligned to the GIS/F2 requirements.

Maximum Operating Pressure (MOP) = 2.0 Bar.



Every effort has been made to ensure that the information contained in this publication is accurate at the time of publishing. Crane Ltd assumes no responsibility or liability for typographical errors or omissions or for any misinterpretation of the information within the publication & reserves the right to change without notice.

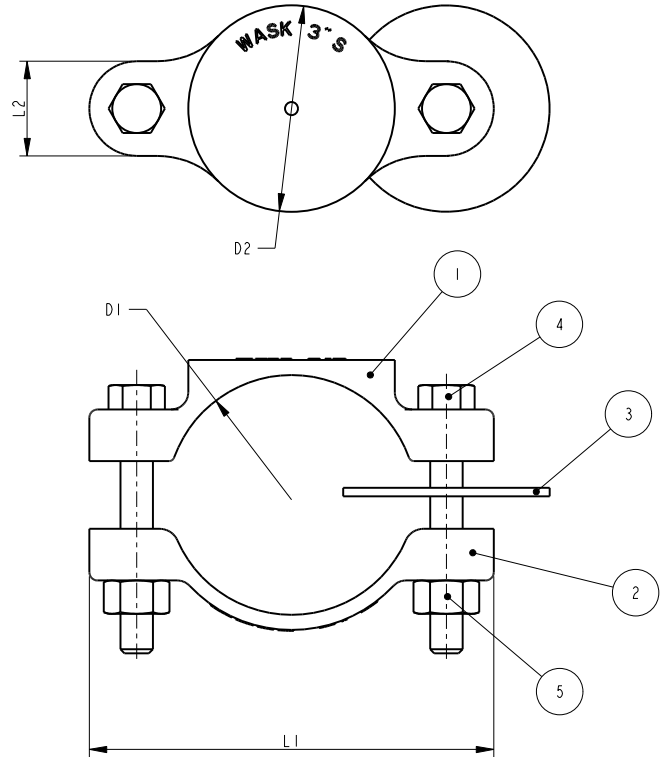
**METALLIC PIPE SIZES**

Available in 2 ranges of specific sizes for Cast Iron/Asbestos Cement and Steel/PVC in nominal diameters from 2" to 12".

**DIMENSIONS**

May also be used to reinforce metallic gas mains with thinner walls (less than 3 pitches = 7mm) or for non-metallic, low pressure gas mains such as PVC or Asbestos Cement.

SIZE = NOMINAL MAINS OUTSIDE DIAMETER		
MAIN SIZE	ØD (CI/AC)	ØD (St/PVC)
2"	N/A	60.3
3"	95.5	88.9
4"	121.9	114.3
5"	149.9	N/A
6"	177.3	168.3
8"	232.2	219.1
9"	259.1	N/A
10"	N/A	273.0
12"	N/A	323.9



To visit our Video Library go to:  
[www.youtube.com/user/CraneBSU](http://www.youtube.com/user/CraneBSU)



46-48 WILBURY WAY, HITCHIN,  
 HERTFORDSHIRE, SG4 0UD  
 TELEPHONE: +44 (0)1462 443225  
 TELEPHONE: +44 (0)1462 443226  
 FAX: +44 (0)1462 443311  
 EMAIL: [sales@wask-uk.com](mailto:sales@wask-uk.com)

[www.wask-uk.com](http://www.wask-uk.com)



FM 00311 EMS 553775

- Designed and manufactured under quality management systems in accordance with BS EN ISO 9001.

Every effort has been made to ensure that the information contained in this publication is accurate at the time of publishing. Crane Ltd assumes no responsibility or liability for typographical errors or omissions or for any misinterpretation of the information within the publication and reserves the right to change without notice.

W\_PDS\_1020\_v1