

# **SIDE SERVICE TEE FITTINGS.**

The plug lifter tool is supplied with a reversible cap and adaptor bush for use with the side service tee.

Set up as follows:-

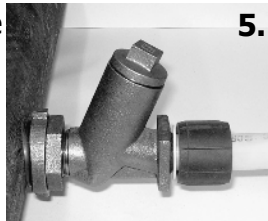
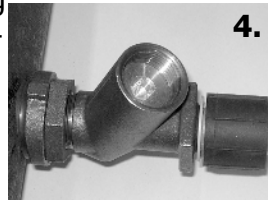
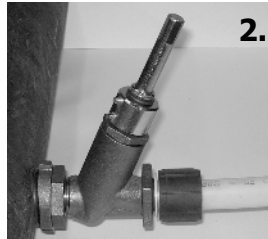
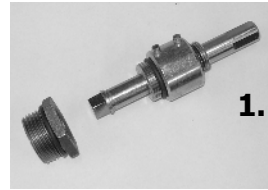
All sizes - 3/4" to 1" bush (BE0035)

1. To open the side service tee internal plug, the adaptor bush must first be screwed on to the lifter tool.

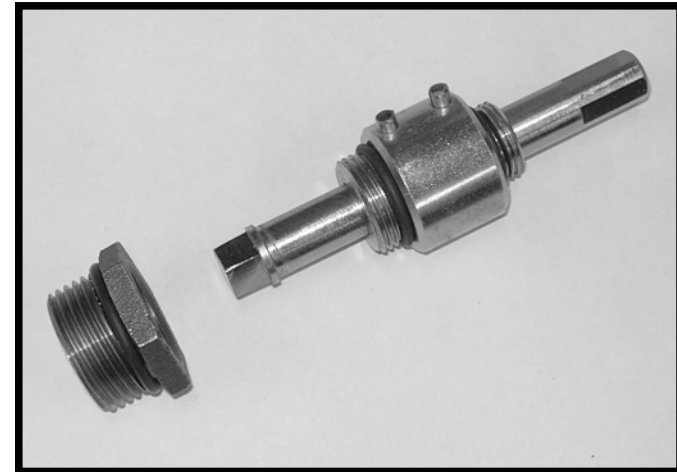
2. Remove the closure plug and screw the lifter tool into the side service tee. Engage the spindle into the internal plug - (see photo 2).

3. Unscrew the internal plug using a 13mm A/F or an adjustable spanner until the plug comes to a dead stop under adaptor bush - (see photo 3).

4. Remove spanner and pull spindle upwards to disengage from the plug. Unscrew the lifter tool and adaptor from side service tee body. (The position of the stopper is now set to the correct distance within the body to allow the fitting of the closure plug and provide the optimal flow rate) - (see photo's 4 & 5).



## **OPERATING INSTRUCTIONS FOR UNIVERSAL STOPPER LIFTER KEY. (BE0034)**



**Crane Building Services & Utilities.**  
46-48 Wilbury Way, Hitchin, SG4 0UD  
Tel: 01462 443225 Fax: 01462 443127  
Issue 3 - May 2017 JR0066

## HOUSE ENTRY TEE FITTINGS.

1. The plug lifter tool is supplied with a reversible cap with alternative male BSP threads on each side.

Set up as follows :-

20mm & 25mm - 1/2" BSP

32mm - 3/4" BSP

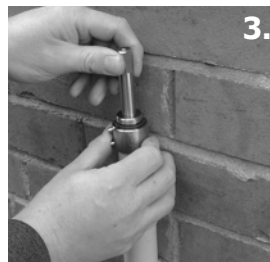
2. Remove the closure cap from the fitting, then fit the tool by engaging the spindle in to the internal plug and then hand tighten the cap to the tee body - (see photo 1).

3. By using a suitable 1/2" A/F spanner or ratchet the plug may be closed or opened as required. When closing the plug only a light force is required to make a seal - (see photo 2).

4. Removal of the tool should be carried out by holding the spindle stationary and rotating the cap until the tool comes free from the fitting - (see photo 3).

This will ensure correct location of the stopper plug - (see photo 4).

5. Refit the closure cap and weather plug, the fitting may now be leak tested as required by your employer - (see photo 5).



## TOP SERVICE TEE FITTINGS.

1. The plug lifter tool is supplied with a reversible cap with alternative male BSP threads on each side.

Set up as follows :-

All sizes - 3/4" BSP

2. Remove the taper plug from the fitting, then fit the tool by engaging the spindle in to the internal plug and then hand tighten the cap to the tee body - (see photo 1).

3. By using a suitable 1/2" A/F spanner or ratchet the plug may be opened or closed as required. When closing the plug only a light force is required to make a seal - (see photo 2).

4. Removal of the tool should be carried out by holding the spindle stationary and rotating the cap until the tool comes free from the fitting - (see photo 3).

This will ensure correct location of the stopper plug - (see photo 4).

5. Refit the taper plug, the fitting may now be leak tested as required by your employer - (see photo 5).

