

CRIMP TOOL CARE & MAINTENANCE



TOOL IDENTIFICATION

Size	P/N	Colour
16mm SDR7	BE0037	Brown
20mm SDR9	BE0038	Green
25mm SDR11	BE0039	Blue
32mm SDR11	BE0040	Yellow

IMPORTANT CRIMP TOOL INFORMATION

1. The crimp tool is specifically designed for use with the WASK jointing system on PE80 pipe only. It must not be used for any other application.
2. The correct sized crimp tool must be used to suit the polyethylene pipe being connected.
3. Do not use handle extensions on the crimp tool.
4. Inspect the crimp tool for signs of wear, the jaws are clean and make sure the mating faces close completely prior to use. (See next page)
5. Do not store the crimp tool wet.
6. If the crimp tool shows signs of damage which would affect the joint strength or personal injury – DO NOT USE

CHECKING THE CRIMP TOOL FOR WEAR OR DAMAGED

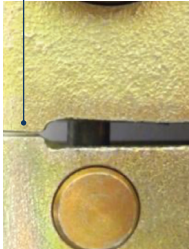
It is important to check your crimp tool at frequent intervals for signs of damage and wear which may affect the joint performance and safe use.

CORRECT JAW CLOSURE

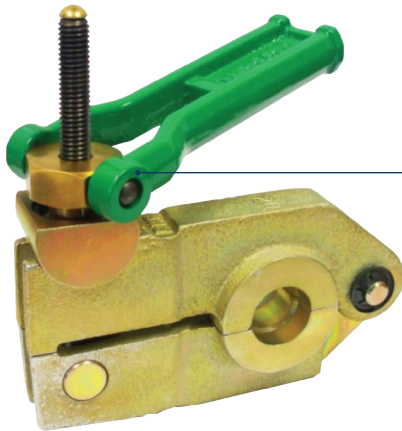
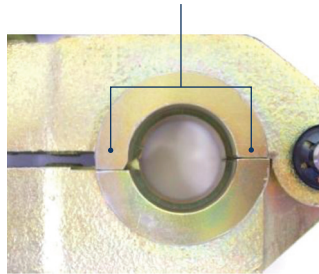
The maximum force required to make a crimp will be sufficient to close the anvils located at the front of the tool. No further tightening is required. When the anvils are closed and gaps are present between the mating surfaces, then wear or damaged jaws due to over straining is likely.

THE MAXIMUM PERMISSIBLE GAP THAT IS ACCEPTABLE 0.25mm.

Gap between anvils



Maximum gap permissible is 0.25mm between the mating surfaces.



Check the threaded stud is not damaged and the brass nut freely runs up and down. Periodically lubricate the stud but CAUTION must be taken not to contaminate the Crimp spigot or the bore of the PE pipe when using the tool

Check that the handle is firmly attached.



To visit our Video Library go to:
www.youtube.com/user/CraneBSU



ISO 14001 Reg No. EMS 78657

TELEPHONE: +44 (0)1462 443225
TELEPHONE: +44 (0)1462 443226
FAX: +44 (0)1462 443311
EMAIL: sales@wask-uk.com
www.wask-uk.com

Designed & manufactured under quality management systems in accordance with BS EN ISO 9001:2008

Every effort has been made to ensure that the information contained in this publication is accurate at the time of publishing. Crane Ltd assumes no responsibility or liability for typographical errors or omissions or for any misinterpretation of the information within the publication & reserves the right to change without notice.

W_CT_0720
IOM_JR0084_V1