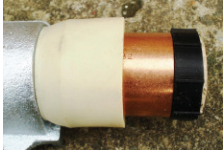


PE CRIMP JOINTING INSTRUCTIONS

HAND TOOL (16mm, 20mm, 25mm & 32mm)



1. Remove crimp ring & rubber spacer.



2. Cut PE pipe to required length. Ensure pipe is square & free from burrs.



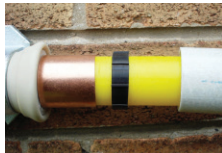
3. Slide GRP sleeve, spacer rubber & crimp ring onto the PE pipe & discard the cardboard packing.



4. Carefully peel back the shroud. Make sure the plastic washer is in place.



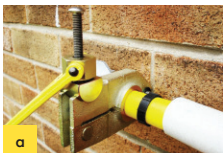
5. Push the pipe fully onto the spigot of the fitting.



6. Slide the crimp ring up to the plastic washer. The washer & crimp ring must be pushed against the shoulder of the spigot.



7. Carefully position the correct size of crimp tool centrally over the copper crimp ring. Close the jaws of the crimp tool lightly over the crimp ring, once again, check the tool is centrally positioned & the crimp ring, washer is against the shoulder of the spigot.



8. Screw the jaws of the crimp tool fully together. (ie, crimp jaws fully closed) to complete the joint.

DO NOT attempt to re-crimp once the tool has been removed from the joint.

DO NOT re-orientate the crimp tool on a partially completed joint.

Note Use the appropriate size tool (16mm, 20mm, 25mm or 32mm)



9. Slide the spacer rubber over the crimp ring.

Carefully push the GRP sleeve over the spacer rubber & push up to the plastic washer.

Gently roll the shroud over the GRP sleeve.



PE CRIMP JOINTING INSTRUCTIONS

HAND TOOL (63mm)



1. Remove crimp ring dispose of cardboard protection sleeve.



2. Carefully roll back shroud to enable crimp access.



3. Cut PE to required length (ensure pipe is square and free from burrs) – Place crimp ring on pipe and place PE pipe over metal insert.
4. Slide PE as far down



spigot as possible – (butt up to the plastic washer).
5. Slide crimp ring into



position butting up to plastic washer.
6. Position crimp tooling



over crimp ring (crimp tool covers all the ring fully).
7. Ensure the crimp



ring is pushed up to the plastic washer.

Operate crimp tooling to perform crimp.
8. When complete



remove crimp tool - tooling releases when complete.
9. Slide over GRP into



position.
10. Roll back shroud to



complete.