

# PE CRIMP JOINTING INSTRUCTIONS HAND TOOL (32mm & 25mm)



1. Remove crimp ring & rubber spacer



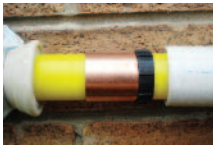
2. Cut PE pipe to required length. Ensure pipe is square & free from burrs.



3. Slide GRP sleeve, spacer rubber & crimp ring onto the PE pipe & discard the cardboard packing.



4. Carefully peel back the shroud. Make sure the plastic washer is in place.



5. Push the pipe fully onto the spigot of the fitting.



6. Slide the crimp ring up to the plastic washer. The washer & crimp ring must be pushed against the shoulder of the spigot.



a



b

7. Carefully position the correct size of crimp tool centrally over the copper crimp ring. Close the jaws of the crimp tool lightly over the crimp ring, once again, check the tool is centrally positioned & the crimp ring, washer is against the shoulder of the spigot.



a

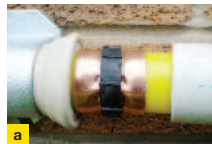


b

8. Screw the jaws of the crimp tool fully together. (ie, crimp jaws fully closed) to complete the joint.

**DO NOT** attempt to re-crimp once the tool has been removed from the joint.

**DO NOT** re-orientate the crimp tool on a partially completed joint.



a



b

9. Slide the spacer rubber over the crimp ring.

Carefully push the GRP sleeve over the spacer rubber & push up to the plastic washer.

Gently roll the shroud over the GRP sleeve.



c

**Note** Use the appropriate size tool (25mm or 32mm)

# PE CRIMP JOINTING INSTRUCTIONS POWER TOOL (63mm)



1. Remove crimp ring  
dispose of cardboard  
protection sleeve



2. Carefully Roll back  
shroud to enable  
crimp access



3. Cut PE to required  
length (ensure pipe is  
square and free from  
burrs) – Place crimp  
ring on pipe and place  
PE pipe over metal  
insert.



4. Slide PE as far  
down spigot as  
possible – (butt up to  
the plastic washer



5. Slide crimp ring into  
position butting up to  
plastic washer



6. Position crimp  
tooling over crimp  
ring (crimp tool covers  
all the ring fully)



7. Ensure the crimp  
ring is pushed up to  
the plastic washer.  
  
Operate crimp tooling  
to perform crimp



8. When complete  
remove crimp tool -  
tooling releases when  
complete



9. Slide over GRP  
into position



10. Roll back shroud  
to complete

